



**Parts**town<sub>UK</sub>

# CATERING VAN STOCK

SPRING 2024



REFRIGERATION  
SPARES



LAUNDRY  
SPARES



CATERING  
SPARES



VENDING  
SPARES



COFFEE  
SPARES

<b>GAS EQUIPMENT</b>	3	<b>TOOLS &amp; INSTRUMENTS</b>	81
Pilot Burners, Jets & Fittings	3	Gas Testing	81
Gas Igniters & Leads	6	Thermometers	83
Thermocouples & Thermopiles	8	Electrical Testing Instruments & Safety Equipment	86
Gas Valves & Regulators	11	Hand Tools	90
Gas Hoses & Pipe Fittings	18	Tool Bags	96
Gas Sealants, Lubricants & Leak Detector Sprays	22		
Warning Labels & Notice Pads	23	<b>CONSUMABLES &amp; PPE</b>	97
		Batteries	97
<b>ELECTRICAL EQUIPMENT</b>	24	Abrasive Cleaning Items	97
Terminals & Crimping Sets	24	Sealants	98
Cables, Cable Fittings, Plugs & Fuses	27	Lubricants, Greases & Cleaning Sprays	99
Switches	31	Adhesives	101
Thermostats	33	PPE & Hand Wipes	101
Control Knobs	35		
Energy Regulators	36	<b>TECHNICAL TRAINING &amp; SUPPORT FOR CATERING TECHNICIANS</b>	
Contactors & Relays	37		
Lamps	37	We provide technical training courses and assessments for engineers and technicians working within the commercial food service industry. Our partnerships with equipment manufacturers have led to us being an approved training partner for many leading brands.	
Heating Elements	45		
Fans	46		
Capacitors	47		
		We are certified by LCL Awards to run courses and carry out assessments under the Nationally Accredited Certification Scheme for Gas Fitting Operatives (ACS). We also offer a Managed Learning Programme for Non-Domestic Catering new entrants.	
<b>WATER EQUIPMENT</b>	48		
Pumps	48		
Detergent & Rinse Aid Dosing Pumps & Fittings	48		
Solenoid Valves	51		
Water Connection Hoses	52		
Drainage Fitting & Hoses	54		
Water Connection Fittings	55		
Pre Rinse Spare Parts	57		
Contract Taps	67		
Water Boiler Taps	67		
Water Filters & Softeners	68		
<b>HARDWARE</b>	75		
Pipe Clips, O-Ring Sets & Fasteners	75		
Castors & Feet	76		
Cabinet & Hot Cupboard Door Fittings	79		
Dishwasher Racks	80		

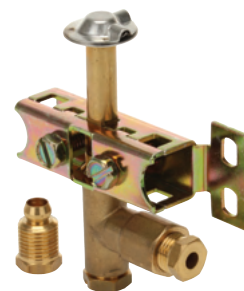


All information correct at time of publishing.

## SIT 100 SERIES PILOT BURNER

Multigas with either a 0.20mm or 0.35mm jet. Supplied with either 2 or 3 position brackets.

Description	Part No.	Injector	No. of Positions
SIT One Flame Pilot Burner	SIT0.100.013	0.20mm	2
SIT Two Flame Side Entry Pilot	SIT0.100.020	0.20mm	2
SIT Three Flame Side Entry Pilot	SIT0.100.001	0.20mm	3
SIT Three Flame Side Entry Pilot	SIT0.100.004	0.35mm	3
SIT Three Flame Side Entry Pilot	SIT0.100.025	0.20mm	2



## SIT 140 SERIES PILOT BURNER

M10x1. Jet and electrode not included.

Description	Part No.
SIT One Flame Pilot Burner	SIT0.140.026
SIT One Flame Pilot Burner	SIT0.140.028
SIT One Flame Pilot Burner	SIT0.140.102
SIT Two Flame Pilot Burner	SIT0.140.015
SIT Two Flame Pilot Burner	SIT0.140.020



## SIT 145 SERIES PILOT BURNER

Jet and electrode not included.

Description	Part No.
SIT One Flame Pilot Burner - Left Hand	SIT0.145.007
SIT One Flame Pilot Burner - Right Hand	SIT0.145.010



## SIT 150 SERIES PILOT BURNER

Jet and electrode not included.

Description	Part No.
SIT Two Flame Pilot Burner	SIT0.150.085



## SIT 160 SERIES PILOT BURNER

Jet and electrode not included.

Description	Part No.
SIT One Flame Pilot Assembly	SIT0.160.002
SIT Three Flame Pilot Burner	SIT0.160.032
SIT Three Flame Pilot Burner	SIT0.160.042



## ROBERTSHAW PILOT ASSEMBLIES

Description	Part No.
Robertshaw One Flame Pilot Assembly 2CH-10	RBS27989
Robertshaw Two Flame Pilot Assembly 5CL-2	RBS76446



Description	Part No.
Robertshaw Three Flame Pilot Assembly NG 6CH24-1	RBS66703
Robertshaw Three Flame Pilot Assembly 6CH14-1	RBS66905



## SIT PILOT GASKET

For use with 150 and 160 Series Pilot Burners

Description	Part No.
SIT Gasket Target for Pilot Body (Dim. 71x26 mm)	SIT0.948.060



## SIT PILOT HOODS

Description	Part No.
SIT One Flame Pilot Head	SIT0.976.001
SIT One Flame Pilot Head - 2 Holes Ø 3.6mm	SIT0.975.015
SIT Three Flame Pilot Head - 2 Holes Ø 3.6mm	SIT0.975.004



## SIT PILOT JETS

Description	Part No.
SIT Pilot Jet LPG Ø 0.20mm	SIT0.977.030
SIT Pilot Jet NG Ø 0.35mm	SIT0.977.031
SIT Pilot Jet NG Ø 0.40mm	SIT0.977.032
SIT Pilot Jet NG/LPG Ø 0.25mm	SIT0.977.051





Description	Part No.
SIT Pilot Jet NG Ø 0.27mm	SIT0.977.113
SIT Pilot Jet NG Ø 0.35mm	SIT0.977.091
SIT Pilot Jet LPG Ø 0.14mm	SIT0.977.115
SIT Pilot Jet LPG Ø 0.19mm	SIT0.977.092
SIT Pilot Jet LPG Ø 0.35mm	SIT0.977.106



Description	Part No.
SIT Pilot Jet NG Ø 0.41mm	SIT0.977.118
SIT Pilot Jet NG Ø 0.51mm	SIT0.977.119
SIT Pilot Jet LPG Ø 0.25mm	SIT0.977.123
SIT Pilot Jet LPG Ø 0.30mm	SIT0.977.122



## PILOT JETS

Description	Part No.
Pilot Jet Ø 0.20mm	PTVS-1001
Pilot Jet Ø 0.50mm	PTVS-1002



## PILOT TUBE NUTS & OLIVES

Description	Part No.
Pilot Nut for Pipe Ø 4mm	SIT0.958.013
Pilot Nut for Pipe Ø 6mm	SIT0.958.011
Pilot Olive for Pipe Ø 4mm	SIT0.957.014
Pilot Olive for Pipe Ø 6mm	SIT0.957.015
Pilot Olive for Pipe Ø 4mm	SIT0.957.009
Pilot Olive for Pipe Ø 6mm	SIT0.957.010
Pilot Olive for Pipe Ø 6mm	SIT0.957.001
Pilot Olive for Pipe Ø 12mm	SIT0.957.007
Ball Sleeve 6mm Olive	RBS15692



## COPPER PILOT PIPE

Sold in 5 metre lengths.

Description	Part No.
Copper Pilot Pipe Ø 1x4mm	PTVS-1003
Copper Pilot Pipe Ø 1x6mm	PTVS-1004



## IGNITION ELECTRODES

Description	Part No.	Connection	Overall Length
Ignition Electrode Straight Ø2.4 Pin - 26.4mm	SIT0.915.025	Ø 2.4mm	60mm
Ignition Electrode Straight M4x1 Pin - 26.4mm	SIT0.915.024	M4 Male	82mm
Ignition Electrode Straight M4x1 Pin - 35mm	SIT0.915.015	M4 Male	82mm
Ignition Electrode Bent M4x1 Pin - 26.5mm	SIT0.915.036	M4 Male	65mm
Ignition Electrode Fixing Nut M10x1	SIT0.974.037		



## PIEZO IGNITERS

Description	Part No.
Piezo Igniter 18mm Dia 2.4mm - Flat Connection	PTVS-1005
Piezo Igniter 22mm Dia 2.4mm - Flat Connection	PTVS-1006
Piezo Igniter 18mm Dia 2.4mm - Dia Connection	PTVS-1007
Piezo Igniter 18mm Dia 2.4mm - Dia Connection	PTVS-1009
Piezo Igniter 22mm Dia 2.4mm - Dia Connection	PTVS-1008



Description	Part No.
Piezo Igniter with 18 & 22mm Head	PTVS-1010



Description	Part No.
Double Piezo Igniter with Lead	PTVS-1011



## HT IGNITER LEADS

Description	Part No.
Ignition Lead 350mm Long	PTVS-1012
Ignition Lead 450mm Long	PTVS-1013
Ignition Lead 750mm Long	PTVS-1014
Ignition Lead 1250mm Long	PTVS-1015
Ignition Lead 1000mm Small Amp Both Ends	PTVS-1016
Ignition Lead 1000mm Small Amp / Round Bullet	PTVS-1017
Ignition Lead 1000mm Round Bullet Both Ends	PTVS-1018



## HT IGNITER CABLE

Supplied in a 10m roll.

Description	Part No.
HT Igniter Cable 10m Roll	PTVS-1019



## IGNITER TERMINALS

Description	Part No.	Connection
Insulated Spade Terminals	PTVS-1020	2.8x0.8mm
Insulated Spade Terminals	PTVS-1021	6.3x0.8mm



Description	Part No.	Connection
Insulated Round Terminals	PTVS-1022	4.0mm dia



Description	Part No.	Connection
Uninsulated Round Terminals	PTVS-1023	2.4mm dia



## SIT IGNITION CONTROL BOX 503 EFD

220-240V 50/60Hz.

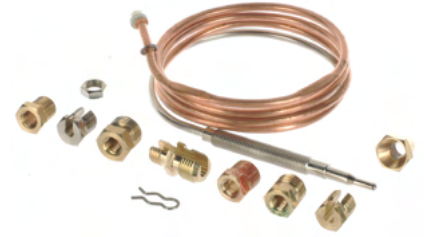
Description	Part No.
Ignition Control Box SVT TW1.5s TS60s 7VA	SIT0.503.204
Ignition Control Box DMT TW1.5s TS30s 9VA	SIT0.503.702



## SUPER UNIVERSAL THERMOCOUPLES

Multi application thermocouple kit supplied with a wide range of adapters and slotted elements.

Description	Part No.
Super Universal Thermocouple 600mm with Aluminised Tip	PTVS-1024
Super Universal Thermocouple 900mm	PTVS-1025
Super Universal Thermocouple 900mm Nickel	PTVS-1026
Super Universal Thermocouple with Interrupter 900mm	PTVS-1027
Super Universal Thermocouple 1500mm	PTVS-1028



## UNIVERSAL THERMOCOUPLES

Description	Part No.
Universal Thermocouple 900mm M9	PTVS-1029
Universal Thermocouple with Interrupter M9x1 900mm	PTVS-1030
Universal Threaded Two Piece Thermocouple 1800mm	PTVS-1031

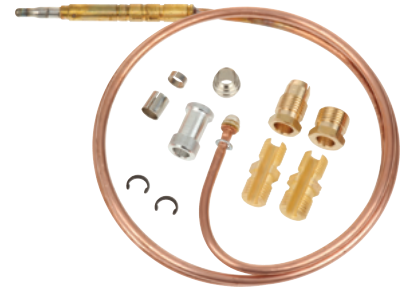


## SIT UNIVERSAL THERMOCOUPLES

Series S 200 thermocouples supplied with:

- 4 connectors M10x1 7/16", M8x1-M9-1 milled 11/32, M10x1 milled.
- 2 bushes Ø6x8.5 and Ø6x17.5.
- 2 adapter rings.
- 2 spacers Ø6x7.5 and Ø6x2.5.

Description	Part No.
SIT Universal Thermocouple 900mm	SIT0.208.002
SIT Universal Thermocouple 1200mm	SIT0.208.004



## SIT 200 SERIES THERMOCOUPLES

Description	Part No.	Sleeve Type	Magnet Connection Nut Features	Aluminized Tip
SIT Thermocouple M9x1 500mm	SIT0.200.007	S332	M9x1 L13.5 s9	no
SIT Thermocouple M9x1 600mm	SIT0.200.009	S332	M9x1 L13.5 s9	no
SIT Thermocouple M9x1 750mm	SIT0.200.011	S332	M9x1 L13.5 s9	no
SIT Thermocouple M9x1 850mm	SIT0.200.013	S332	M9x1 L13.5 s9	no
SIT Thermocouple M9x1 1000mm	SIT0.200.015	S332	M9x1 L13.5 s9	no
SIT Thermocouple M9x1 1200mm	SIT0.200.019	S332	M9x1 L13.5 s9	no
SIT Thermocouple M9x1 1500mm	SIT0.200.021	S332	M9x1 L13.5 s9	no
SIT Thermocouple M8x1 320mm	SIT0.200.042	S335	M8x1 L11 s8	no
SIT Thermocouple M8x1 600mm	SIT0.200.044	S335	M8x1 L11 s8	no
SIT Thermocouple M8x1 850mm	SIT0.200.046	S335	M8x1 L11 s8	no
SIT Thermocouple M8x1 1000mm	SIT0.200.047	S335	M8x1 L11 s8	no
SIT Thermocouple M8x1 1200mm	SIT0.200.049	S335	M8x1 L11 s8	no
SIT Thermocouple M8x1 1500mm	SIT0.200.050	S335	M8x1 L11 s8	no
SIT Thermocouple M9x1 600mm	SIT0.200.055	S335	M9x1 L13.5 s9	no
SIT Thermocouple M9x1 850mm	SIT0.200.057	S335	M9x1 L13.5 s9	no
SIT Thermocouple M9x1 1000mm	SIT0.200.058	S335	M9x1 L13.5 s9	no
SIT Thermocouple M8x1 600mm	SIT0.200.124	S332	M8x1 L11 s8	no
SIT Thermocouple M8x1 1000mm	SIT0.200.127	S332	M8x1 L11 s8	no
SIT Thermocouple M8x1 1200mm	SIT0.200.129	S332	M8x1 L11 s8	no
SIT Thermocouple M8x1 1500mm	SIT0.200.130	S332	M8x1 L11 s8	no
SIT Thermocouple M9x1 400mm	SIT0.200.005	S332	M9x1 L13.5 s9	no



S335



S332

## SIT 270 SERIES INTERRUPTED THERMOCOUPLE

Magnet Connection Nut M9x1.



S332



S333

Description	Part No.	Sleeve Type	Tip Type	Interruption Terminals	Length - Magnet Connection to Interrupter Centre	Leads [mm]
SIT Interrupted Thermocouple M9x1 320mm	SIT0.270.407	S332	200 Series		130mm	Not Fitted
SIT Interrupted Thermocouple M9x1 600mm	SIT0.270.015	S333	200 Series		180mm	400 HT
SIT Interrupted Thermocouple M9x1 600mm	SIT0.270.408	S332	200 Series	Faston	130mm	Not Fitted
SIT Interrupted Thermocouple M9x1 600mm	SIT0.270.416	S332	Aluminised 200 Series		130mm	Not Fitted
SIT Interrupted Thermocouple M9x1 600mm	SIT0.270.460	S333	200 Series	Faston	180mm	400 HT
SIT Interrupted Thermocouple M9x1 1000mm	SIT0.270.400	S332	200 Series		130mm	Not Fitted

## SIT 290 SERIES QUICK THERMOCOUPLES

Description	Part No.	Sleeve Type	Magnet Connection Nut Features	Aluminized Tip
SIT Thermocouple M9x1 600mm	SIT0.290.016	S332	M9X1 L13.5 s9	no
SIT Thermocouple M9x1 850mm	SIT0.290.018	S332	M9X1 L13.5 s9	no
SIT Thermocouple M9x1 1000mm	SIT0.290.019	S332	M9X1 L13.5 s9	no
SIT Thermocouple M9x1 1200mm	SIT0.290.021	S332	M9X1 L13.5 s9	no
SIT Thermocouple M9x1 1500mm	SIT0.290.022	S332	M9X1 L13.5 s9	no
SIT Thermocouple 11/32 ASA 850mm	SIT0.290.025	S332	11/32 ASA L14 s9	no
SIT Thermocouple M9x1 450mm	SIT0.290.084	S333	M9X1 L13.5 s9	yes
SIT Thermocouple M9x1 600mm	SIT0.290.086	S333	M9X1 L13.5 s9	yes
SIT Thermocouple M9x1 750mm	SIT0.290.087	S333	M9X1 L13.5 s9	yes
SIT Thermocouple M9x1 1500mm	SIT0.290.092	S333	M9X1 L13.5 s9	yes
SIT Thermocouple M9x1 600mm	SIT0.290.150	S333	M9X1 L13.5 s9	yes
SIT Thermocouple M10x1 1000mm	SIT0.290.155	S333	M10X1 L10 s8	yes



S332



S333

## ROBERTSHAW UNIVERSAL C3 THERMOCOUPLES

Description	Part No.
Robertshaw 18" C3 Universal Thermocouple	RBS1970-018
Robertshaw 24" C3 Universal Thermocouple	RBS1970-024
Robertshaw 30" C3 Universal Thermocouple	RBS1970-030
Robertshaw 36" C3 Universal Thermocouple	RBS1970-036
Robertshaw 48" C3 Universal Thermocouple	RBS1970-048
Robertshaw 60" C3 Universal Thermocouple	RBS1970-060
Robertshaw 72" C3 Universal Thermocouple	RBS1970-072





## ROBERTSHAW SNAP FIT THERMOCOUPLES

Description	Part No.
Robertshaw 18" Snap Fit Thermocouple	RBS1980-018
Robertshaw 24" Snap Fit Thermocouple	RBS1980-024
Robertshaw 36" Snap Fit Thermocouple	RBS1980-036
Robertshaw 48" Snap Fit Thermocouple	RBS1980-048
Robertshaw 60" Snap Fit Thermocouple	RBS1980-060
Robertshaw 72" Snap Fit Thermocouple	RBS1980-072



## ROBERTSHAW HEAVY DUTY THERMOCOUPLES

Description	Part No.
Robertshaw 18" Heavy Duty Thermocouple	RBS1900-018
Robertshaw 24" Heavy Duty Thermocouple	RBS1900-024
Robertshaw 36" Heavy Duty Thermocouple	RBS1900-036
Robertshaw 48" Heavy Duty Thermocouple	RBS1900-048



## M9 THERMOCOUPLE

Description	Part No.
Thermocouple 400mm M9	PTVS-1032
Thermocouple 500mm M9	PTVS-1033
Thermocouple 600mm M9	PTVS-1034
Thermocouple 1200mm M9	PTVS-1035
Thermocouple 1500mm M9	PTVS-1036



## ROBERTSHAW THERMOPILES

Description	Part No.
Robertshaw 36" Twin Lead Thermopile	RBS21436
Robertshaw 36" Coaxial Thermopile	RBS51053
Robertshaw 60" Coaxial Thermopile	RBS1950-003



## SIT THERMOCOUPLE EXTENSION

Description	Part No.
SIT Thermocouple Extension M9x1 600mm	SIT0.218.101



## UNIVERSAL THERMOCOUPLE EXTENSION

Description	Part No.
Universal Thermocouple Extension M9x1 900mm	PTVS-1037



## SIT THERMOCOUPLE FIXING NUT

Description	Part No.
SIT Thermocouple Nut M10x1	SIT0.974.036



Description	Part No.
SIT Thermocouple Nut M8x1	SIT0.992.014



## THERMOCOUPLE TESTER

Description	Part No.
Thermocouple Tester	PTVS-1038



## PEL 20S GAS VALVES

- M8x1mm thermocouple connection.
- Inlet M16x1.5 (tube  $\varnothing$  10mm).
- Outlet M16x1.5 (tube  $\varnothing$  10/8mm).
- Shaft Diameter 8x6.5mm.

Description	Part No.	Shaft Length	Shaft Flattening
PEL 20S Gas Tap Without Pilot Connections	PTVS-1039	22/15mm	below
PEL 20S Gas Tap Without Pilot Connections	PTVS-1040	40/15mm	above



## PEL 21S GAS VALVES

- Pilot Connection M10x1.
- Outlet M16x1.5 (tube ø 10/8mm).
- Shaft Diameter 8x6.5mm.



Description	Part No.	Thermocouple Connection	Inlet	Shaft Length	Shaft Flattening
PEL 21S Gas Tap With Pilot Connections	PTVS-1041	M8x1mm	M16x1.5 (tube ø 10mm)	22/15mm	below
PEL 21S Gas Tap With Pilot Connections	PTVS-1042	M8x1mm	M16x1.5 (tube ø 10mm)	39/15mm	below
PEL 21S Gas Tap With Pilot Connections	PTVS-1043	M8x1mm	Pipe flange ø21mm	32/25mm	above
PEL 21S Gas Tap With Pilot Connections	PTVS-1044	M9x1mm	M16x1.5 (tube ø 10mm)	22/15mm	below

## PEL 22 GAS VALVES

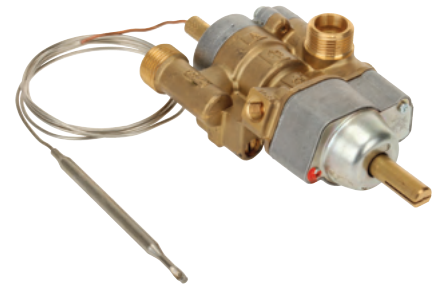
- M9x1mm thermocouple connection.
- Pilot Connection M10x1.
- Inlet M20x1.5 (tube ø 12mm).
- Shaft Diameter 10x8mm.



Description	Part No.	Outlet	Shaft Length	Shaft Flattening
PEL 22S/O Gas Tap With Pilot Connections	PTVS-1045	M20x1.5 (tube ø 12/10mm)	25/17mm	below
PEL 22S/O Gas Tap with Flow Regulator	PTVS-1046	M20x1.5 (tube ø 12mm)	25/17mm	below
PEL 22S/O Gas Tap with Flow Regulator	PTVS-1047	M20x1.5 (tube ø 12/10mm)	25/17mm	above
PEL 22S/V Gas Tap With Pilot Connections	PTVS-1048	M20x1.5 (tube ø 12/10mm)	25/17mm	above

## PEL 24ST THERMOSTATIC GAS VALVE

- M9x1mm thermocouple connection.
- Pilot Connection M10x1.
- Inlet M20x1.5 (tube ø 12mm).
- Outlet M20x1.5 (tube ø 12/10mm).
- Shaft Diameter 10x8mm.
- Shaft length 25/17mm.
- Axis Flattening: Above.



Description	Part No.
PEL 24ST Thermostatic Gas Valve 100-300°C	PTVS-1049

## PEL 25ST THERMOSTATIC GAS VALVE

- Pilot Connection M10x1.
- Inlet M16x1.5 (tube ø 10mm).
- Outlet M16x1.5 (tube ø 10/8mm).



Description	Part No.	Thermocouple Connection	Shaft Diameter	Shaft Length	Shaft Flattening
PEL 25ST Thermostatic Gas Valve 100-300°C	PTVS-1050	M9x1mm	8x6.5mm	22/15mm	above
PEL 25ST Thermostatic Gas Valve 140-300°C	PTVS-1051	M8x1mm	8x6.5mm	38/15mm	above

## MAGNETIC UNITS

Description	Part No.	Thermocouple Connection	Head Ø(mm)	End Ø(mm)	Length (mm)
Magnetic Unit Small Head/Small Body	PTVS-1052	n/a	13	9	35
Magnetic Unit Small Head/Large Body	PTVS-1053	n/a	15	11	44
Magnetic Unit Large Head/Large Body	PTVS-1054	n/a	15.5	14	44
Magnetic Unit Threaded Head/Large Body	PTVS-1055	M10x1	24	18	59
Magnetic Unit Threaded Head/Large Body	PTVS-1056	M9x1	15	11	44



## MINISIT VALVE - HOT CUPBOARD

Temperature range 40-110°C.

Inlet  $\varnothing 1/2"$ F, outlet  $\varnothing 3/8"$ F.

Maximum inlet pressure 50 mbar.

Capillary length 1050mm with bulb  $\varnothing 5 \times 125$ mm.

Description	Part No.
Minisit Gas Valve 40-110°C	SIT0.710.817



## MINISIT VALVE - FRYERS

Maximum inlet pressure 50 mbar.

Capillary length 1050mm with bulb  $\varnothing 6 \times 105$ mm.

Description	Part No.	Inlet	Outlet
Minisit Gas Valve 110-190°C	SIT0.710.756	$\varnothing 1/2"$ F	$\varnothing 3/8"$ F
Minisit Gas Valve 120-200°C	SIT0.710.743	$\varnothing 3/8"$ F	$\varnothing 3/8"$ F with elbow flanges



## MINISIT VALVE - OVENS

Temperature range 100-340°C.

Inlet  $\varnothing 1/2"$ F, outlet  $\varnothing 3/8"$ F.

Maximum inlet pressure 50 mbar.

Outlet pressure 3-18 mbar.

Capillary length 1050mm with bulb  $\varnothing 5 \times 68$ mm.

Description	Part No.
Minisit Gas Valve 100-340°C	SIT0.710.650



## EUROSIT 630 GAS VALVE

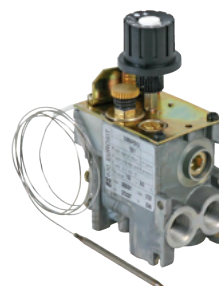
Inlet  $\varnothing 3/8"$ F, outlet  $\varnothing 3/8"$ F.

Maximum inlet pressure 50 mbar.

Outlet pressure 3-18 mbar (with pressure governor).

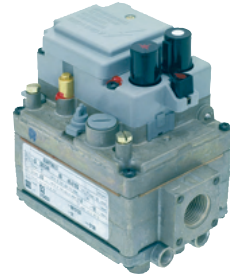
Thermocouple Connection - M9x1.

Description	Part No.	Bulb	Capillary Length
Eurosit Gas Valve 60-300°C	SIT0.630.326	$\varnothing 4 \times 72$ mm	1050mm
Eurosit Gas Valve 100-340°C	SIT0.630.330	$\varnothing 4 \times 72$ mm	1050mm
Eurosit Gas Valve 100-340°C	SIT0.630.331	$\varnothing 4 \times 72$ mm	1050mm
Eurosit Gas Valve 110-190°C	SIT0.630.332	$\varnothing 4 \times 202$ mm	1050mm



## ELETTROSIT 810 GAS VALVE

Description	Part No.	Thermocouple Connection		Power Supply	
		Inlet	Outlet	Inlet	Outlet
Elettrosit 810 Gas Valve	SIT0.810.156	11/32"	1/2"	1/2"	230V 50Hz
Elettrosit 810 Gas Valve	SIT0.810.175	M 9x1	3/4"	3/4"	230V 50Hz



## SIT NOVA 820 GAS VALVE



Description	Part No.	Thermocouple Connection		Inlet	Outlet	Power Supply	Outlet Pressure (with Pressure Governor)
		Connection	Connection				
Nova 820 Gas Valve	SIT0.820.012	M 9x1		1/2"	1/2"	240V 50Hz	3-30 mbar
Nova 820 Gas Valve	SIT0.820.018	M 9x1		1/2"	1/2"	220/240V 50Hz	3-30 mbar
Nova 820 Gas Valve	SIT0.820.031	M 9x1		1/2"	1/2"	220/240V 50Hz	5-50 mbar
Nova 820 Gas Valve	SIT0.820.301	M 9x1		1/2"	1/2"	Millivoltage version	5-50 mbar
Nova 820 Gas Valve	SIT0.820.303	M 9x1		1/2"	1/2"	Millivoltage version	3-30 mbar

## SIT NOVA 824 GAS VALVE



Description	Part No.	Thermocouple Connection		Inlet	Outlet	Power Supply	Outlet Pressure (with Pressure Governor)
		Connection	Connection				
Nova 824 Gas Valve	SIT0.824.011	M 9x1		1/2"	1/2"	230V 50Hz	2-50 mbar

## SIT GAS VALVE PARTS

Description	Part No.
Piezo Igniter Cover	SIT0.073.015
Piezoelectric Ignition Switch with Nut	SIT0.073.953
Black Knob for Minisit	SIT0.916.124
Black Knob for Minisit	SIT0.916.095





## ROBERTSHAW GAS THERMOSTAT

Description	Part No.
Robertshaw Operating Thermostat 200-375°F	RBSGSH3-024
Robertshaw Gas Thermostat 220-400°F	RBSGSA60301800



## ROBERTSHAW MILLIVOLT GAS VALVE

Description	Part No.
Robertshaw Unitrol 7000 BMVRL 3/4" Gas Valve	RBS402-811-460



## ROBERTSHAW BGOL GAS VALVE

Description	Part No.
Robertshaw Unitrol 7000 BGORL 3/4" Gas Valve	RBS4J1-541-010



## ROBERTSHAW BGOR GAS VALVE

Description	Part No.
Robertshaw Unitrol 7000 BGOT 3/4" Gas Valve	RBS380-541-078



## ROBERTSHAW 240V GAS VALVE

Description	Part No.
Robertshaw Unitrol 7000 BER Gas Valve	RBS4G5-941-300



## ROBERTSHAW GAS VALVE MAGNETS

Description	Part No.
Robertshaw Thermocouple Gas Valve Magnet	RBS83397
Robertshaw Millivolt Gas Valve Magnet	RBS83399



## ROBERTSHAW BLUE BIRD INTERRUPTER LEAD

Description	Part No.
Robertshaw Universal 36" Interrupter Lead	RBS21609
Robertshaw Blue Bird Lead Assembly 300mm	RBS41-042



## ROBERTSHAW REDUCING BUSH

Description	Part No.
Robertshaw 3/4" to 1/2" Reducer	RBS11-042



## KNOB FOR ROBERTSHAW VALVES

Description	Part No.
Robertshaw Beige Pilot Control Knob	RBS82220



## MAXITROL RV48 GAS GOVERNORS

Description	Part No.
Maxitrol Gas Governor 1/2"	MXT207002
Maxitrol Gas Governor 3/4"	MXT207003



## JEAVONS J78R GAS GOVERNORS

Description	Part No.
Jeavons J78R Gas Governor 1/2"	JEA207004
Jeavons J78R Gas Governor 3/4"	JEA207005
Jeavons J78R Gas Governor 1"	JEA207006



## GOLD SEAL GAS SOLENOID VALVES

Description	Part No.
Gas Solenoid Valve 1/2"	SNTGSV15
Gas Solenoid Valve 3/4"	SNTGSV20
Gas Solenoid Valve 1"	SNTGSV25
Gas Solenoid Valve 1 1/4"	SNTGSV32
Gas Solenoid Valve 1 1/2"	SNTGSV40
Gas Solenoid Valve 2"	SNTGSV50
Gas Solenoid Valve 2 1/2"	SNTGSV65



## GAS LEVER BALL VALVES

Description	Part No.
15mm Compression Gas Lever Valve	PTVS-1057
22mm Compression Gas Lever Valve	PTVS-1058
28mm Compression Gas Lever Valve	PTVS-1059
1/2" BSP Taper Female/Female Lever Valve	PTVS-1060
3/4" BSP Taper Female/Female Lever Valve	PTVS-1061



## DORMONT GAS HOSES

Dormont standard hoses are designed and manufactured for use in the commercial kitchens environment.

**Standard Hose Construction.** Each hose is constructed from fully annealed 304 stainless steel and features a helical corrugation design that increases strength and flexibility. The dipped pvc coating provides a permanent, wrinkle free, heat and crack resistant smooth surface preventing places where dirt and debris can lodge facilitating cleaning and better hygiene. Antimicrobial coating inhibits the growth of mildew, mould and odour causing bacteria on the hose.

Flared mechanical end fittings provide increased service life at critical twisting points compared to welded fittings. Push-to-connect, quick disconnect coupling unit can be operated one handed and features a flat face that reduces the places that dirt and debris can accumulate.

Braided hoses have the quality construction of the standard hose with an added layer of stainless steel braiding that prevents the corrugations from stretching when a piece of equipment is moved. This increases the durability and service life of the hose. The braiding, along with the antimicrobial PVC coating process, creates an exceptionally strong protective surface.

**BTU Capacities.** Flow rating BTU @ 0.55 sp. gr. natural gas, 0.58mbar pressure drop, 37.96 MJ/m<sup>3</sup>. Standards / Legislation.

Dormont hoses carry the BSI Kitemark that signifies on going quality testing. Hoses that are certified to BS 669-2: 1997 have only had one sample tested on the original test date.

Description	Part No.
Dormont 1/2" Unbraided Gas Hose 1.0m	DMT2650NPVF36
Dormont 1/2" Unbraided Gas Hose 1.2m	DMT2650NPVF48
Dormont 1/2" Unbraided Gas Hose 1.5m	DMT2650NPVF60
Dormont 3/4" Unbraided Gas Hose 1.0m	DMT2675NPVF36
Dormont 3/4" Unbraided Gas Hose 1.2m	DMT2675NPVF48
Dormont 3/4" Unbraided Gas Hose 1.5m	DMT2675NPVF60
Dormont 1" Unbraided Gas Hose 1.0m	DMT26100NPVF36
Dormont 1" Unbraided Gas Hose 1.2m	DMT26100NPVF48
Dormont 1" Unbraided Gas Hose 1.5m	DMT26100NPVF60
Dormont 1 1/4" Unbraided Gas Hose 1.2m	DMT26125NPVF48
Dormont 1 1/4" Unbraided Gas Hose 1.5m	DMT26125NPVF60
Dormont 1/2" Braided Gas Hose 1.0m	DMT2650BPQ36
Dormont 1/2" Braided Gas Hose 1.2m	DMT2650BPQ48
Dormont 1/2" Braided Gas Hose 1.5m	DMT2650BPQ60
Dormont 3/4" Braided Gas Hose 1.0m	DMT2675BPQ36
Dormont 3/4" Braided Gas Hose 1.2m	DMT2675BPQ48
Dormont 3/4" Braided Gas Hose 1.5m	DMT2675BPQ60
Dormont 1" Braided Gas Hose 1.0m	DMT26100BPQ36
Dormont Straight Restrainer 1.0m	DMTRS36



Braided Gas Hose



Quick Disconnect



Straight Restrainer

## CATERQUIP FLEXIBLE GAS HOSES

Fully welded corrugated stainless steel catering gas hose. Premier Plus has stainless steel 304L wire overbraiding for heavy duty applications.

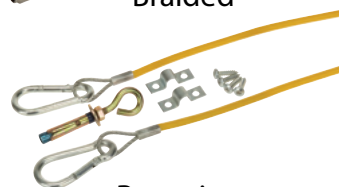
Description	Part No.
Caterquip Unbraided 1/2" x 1.0m	HDQ211030
Caterquip Unbraided 1/2" x 1.25m	HDQ211043
Caterquip Unbraided 1/2" x 1.5m	HDQ211031
Caterquip Unbraided 3/4" x 1.0m	HDQ211032
Caterquip Unbraided 3/4" x 1.25m	HDQ211044
Caterquip Unbraided 3/4" x 1.5m	HDQ211033
Caterquip Unbraided 1" x 1.0m	HDQ211034
Caterquip Unbraided 1" x 1.5m	HDQ211035
Caterquip Braided 1/2" x 1.0m	HDQ211036
Caterquip Braided 1/2" x 1.5m	HDQ211037
Caterquip Braided 3/4" x 1.0m	HDQ211038
Caterquip Braided 3/4" x 1.5m	HDQ211039
Caterquip Restraining Kit for 1.0m Hose	HDQ211041
Caterquip Restraining Kit for 1.5m Hose	HDQ211042



Unbraided



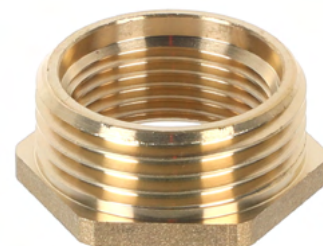
Braided



Restrainer

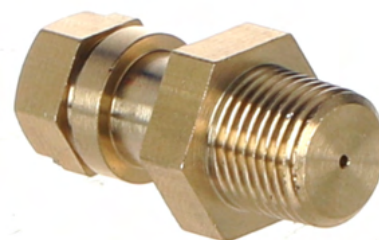
## BRASS REDUCING BUSH

Description	Part No.
1" BSP x 3/4" BSP Brass Reducing Bush	PTVS-1062



## GAS TEST NIPPLE

Description	Part No.
Test Nipple 1/8" BSP	PTVS-1063



## BUNDY TUBING KITS

Description	Part No.
4mm Bundy Tubing - 3 Metre Length	PTVS-1064
6mm Bundy Tubing - 1.22 Metre Length	PTVS-1065





## BLACK GAS PIPE FITTINGS

Description	Part No.
1/2" x 6" Extended Nipple Male/Male Equal	PTVS-1066
3/4" x 6" Extended Nipple Male/Male Equal	PTVS-1067
1/2" x 12" Extended Nipple Male/Male Equal	PTVS-1068
3/4" x 12" Extended Nipple Male/Male Equal	PTVS-1069
1/2" x 18" Extended Nipple Male/Male Equal	PTVS-1070



Description	Part No.
1/2" Black Tee Female/Female Equal	PTVS-1071
3/4" Black Tee Female/Female Equal	PTVS-1072



Description	Part No.
1/2" Black Elbow 90° Male/Female Equal	PTVS-1073
3/4" Black Elbow 90° Male/Female Equal	PTVS-1074



Description	Part No.
1/2" Black Elbow 90° Female/Female Equal	PTVS-1075
3/4" Black Elbow 90° Female/Female Equal	PTVS-1076



Description	Part No.
1/2" Black Nipple Male/Male Equal	PTVS-1077
3/4" Black Nipple Male/Male Equal	PTVS-1078



Description	Part No.
1/2" Black Hexagonal Nipple Male/Male Equal	PTVS-1079
3/4" Black Hexagonal Nipple Male/Male Equal	PTVS-1080



Description	Part No.
1/2" Black Socket Female/Female Equal	PTVS-1081
3/4" Black Socket Female/Female Equal	PTVS-1082



Description	Part No.
1/2" Black Male Plug	PTVS-1083
3/4" Black Male Plug	PTVS-1084



Description	Part No.
1/2" Black Female Plug	PTVS-1085
3/4" Black Female Plug	PTVS-1086



Description	Part No.
1" BSP x 3/4" BSP Black Iron Reducing Bush	PTVS-1087
3/4" BSP x 1/2" BSP Black Iron Reducing Bush	PTVS-1088
1/2" BSP x 3/8" BSP Black Iron Reducing Bush	PTVS-1089



Description	Part No.
1/2" Black Iron Ring Clip Tapped M10	PTVS-1090
3/4" Black Iron Ring Clip Tapped M10	PTVS-1091



Description	Part No.
M10 Backplate	PTVS-1092



Description	Part No.
M10 x 1000mm Threaded Rod	PTVS-1093



## GAS THREAD SEALING TAPE

Complies with BS EN 751-3:1997 for Natural Gas and LPG.

Description	Part No.
Gas Thread Sealing Tape 12mm x 5m	PTVS-1094



## MOLYKOTE 1102 GAS COCK GREASE

Resistant to gaseous Natural Gas, Town Gas and Bottled Gas. DVGW registration number: 82. 01e 497. Meets DIN 3536. Temperature Range: 0 to 160°C, briefly to 220°C.

Description	Part No.
Molykote 1102 Gas Cock Grease 50g Tube	PTVS-1095



## ROCOL GM23660 GAS TAP LUBRICANT

Good lubricating and sealing properties for high temperature applications up to 120°C. Meets the requirements of BS5494:1978, service No. 6 (30,000 operations).

Description	Part No.
Rocol GM23660 Gas Tap Lubricant 50g Tube	ROC32020



## ROCOL GAS SEALANT

A non-setting gas sealant for threaded connections on gas appliances. Applications include Natural Gas, propane, butane and town gas (not for LPG in liquid form). A low pressure sealant maximum pressure 200 mbar (2.5 psi).

Description	Part No.
Rocol Gas Sealant 300g	ROC28042



## ROCOL GAS LEAK DETECTION SPRAY

To detect even small leaks in all positive pressure gas systems.

Description	Part No.
Rocol Gas Leak Detection Spray 300ml	ROC32030



## HAYES GAS LEAK DETECTOR SPRAY

Will locate the smallest leak in gas or pressurised air vessels.

Description	Part No.
Hayes Gas Leak Detector Spray 400ml	PTVS-1096



## GAS WARNING LABELS - UNSAFE APPLIANCE

Dimensions - 64mm x 102mm.

Description	Part No.
Gas Warning Label - Tie on Label	PTVS-1097
Gas Warning Label - Adhesive Sticker	PTVS-1098



## DANGER - DO NOT USE LABELS

Labels that can be used as a self-adhesive sticker or as a tie on tag. Come in packs of 8 and are supplied with cable ties.

Dimensions - 120mm x 100mm.

Description	Part No.
Danger - Do Not Use Label	RGNREGP36
Danger - Do Not Use Label	BES22971



## DANGER DO NOT USE WARNING NOTICE PAD

50 three part certificates per pad. Double cover with writing guard. This requires the engineer's Gas Safe Register number to order this pad.

Description	Part No.
Danger Do Not Use Warning Notice Pad	PTVS-1099



## GAS PIPE IDENTIFICATION TAPE

50mm wide x 33m long.

Description	Part No.
Gas Pipe Identification Tape	PTVS-1100
LPG Pipe Identification Tape	PTVS-1101



## INSULATED CRIMP TERMINALS

BS4579, IEC352-2, ISO1996 and suitable for temperatures of -20 to +85°C. Supplied in packs of 100.

Description	Part No.	Size	Cable
Red 18A Fork Terminals	PTVS-1102	4mm	0.5-1.5mm <sup>2</sup>
Red 18A Fork Terminals	PTVS-1103	5mm	0.5-1.5mm <sup>2</sup>
Red 18A Fork Terminals	PTVS-1104	6mm	0.5-1.5mm <sup>2</sup>
Blue 24A Fork Terminals	PTVS-1105	4mm	1.5-2.5mm <sup>2</sup>
Blue 24A Fork Terminals	PTVS-1106	5mm	1.5-2.5mm <sup>2</sup>
Blue 24A Fork Terminals	PTVS-1107	6mm	1.5-2.5mm <sup>2</sup>
Yellow 36A Fork Terminals	PTVS-1108	4mm	2.5-6mm <sup>2</sup>
Yellow 36A Fork Terminals	PTVS-1109	5mm	2.5-6mm <sup>2</sup>
Yellow 36A Fork Terminals	PTVS-1110	6mm	2.5-6mm <sup>2</sup>



Description	Part No.	Size	Cable
Red 19A Ring Terminals	PTVS-1111	3.5mm	0.5-1.5mm <sup>2</sup>
Red 19A Ring Terminals	PTVS-1112	4mm	0.5-1.5mm <sup>2</sup>
Red 19A Ring Terminals	PTVS-1113	5mm	0.5-1.5mm <sup>2</sup>
Red 19A Ring Terminals	PTVS-1114	6mm	1.5-2.5mm <sup>2</sup>
Blue 27A Ring Terminals	PTVS-1115	4mm	1.5-2.5mm <sup>2</sup>
Blue 27A Ring Terminals	PTVS-1116	5mm	1.5-2.5mm <sup>2</sup>
Blue 27A Ring Terminals	PTVS-1117	6mm	1.5-2.5mm <sup>2</sup>
Yellow 48A Ring Terminals	PTVS-1118	4mm	2.5-6mm <sup>2</sup>
Yellow 48A Ring Terminals	PTVS-1119	5mm	2.5-6mm <sup>2</sup>
Yellow 48A Ring Terminals	PTVS-1120	6mm	2.5-6mm <sup>2</sup>



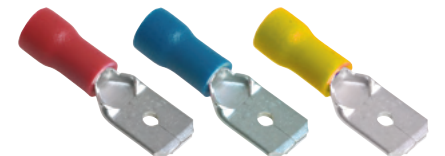
Description	Part No.	Size	Cable
Red 12A F Spade Terminals	PTVS-1121	2.8mm	0.5-1.5mm <sup>2</sup>
Red 12A F Spade Terminals	PTVS-1122	4.8mm	0.5-1.5mm <sup>2</sup>
Red 12A F Spade Terminals	PTVS-1123	6.3mm	0.5-1.5mm <sup>2</sup>
Blue 16A F Spade Terminals	PTVS-1124	6.3mm	1.5-2.5mm <sup>2</sup>
Yellow 20A F Spade Terminals	PTVS-1125	6.3mm	2.5-6mm <sup>2</sup>



Description	Part No.	Size	Cable
Red 12A F Fully Insulated Spade Terminals	PTVS-1126	6.3mm	0.25-1.5mm <sup>2</sup>
Blue 16A F Fully Insulated Spade Terminals	PTVS-1127	6.3mm	1.5-2.5mm <sup>2</sup>
Yellow 20A F Fully Insulated Spade Terminals	PTVS-1128	6.3mm	2.5-6mm <sup>2</sup>

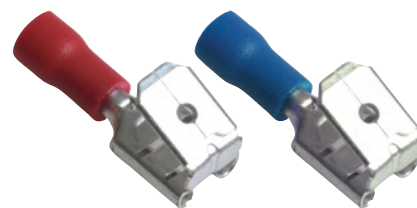


Description	Part No.	Size	Cable
Red 12A M Spade Terminals	PTVS-1129	6.3mm	0.5-1.5mm <sup>2</sup>
Blue 16A M Spade Terminals	PTVS-1130	6.3mm	1.5-2.5mm <sup>2</sup>
Yellow 20A M Spade Terminals	PTVS-1131	6.3mm	2.5-6mm <sup>2</sup>





Description	Part No.	Size	Cable
Red 10A Piggyback Terminals	PTVS-1132	6.3mm	0.5-1.5mm <sup>2</sup>
Blue 15A Piggyback Terminals	PTVS-1133	6.3mm	1.5-2.5mm <sup>2</sup>



Description	Part No.	Size	Cable
Red Butt Splice	PTVS-1134	1.7mm	0.5-1.5mm <sup>2</sup>
Blue Butt Splice	PTVS-1135	2.3mm	1.5-2.5mm <sup>2</sup>
Yellow Butt Splice	PTVS-1136	3.4mm	2.5-6mm <sup>2</sup>



## HIGH TEMPERATURE TERMINALS

Nickel plated for temperatures up to 500°C and supplied in packs of 100.

Description	Part No.	Size	Cable
Spade Terminal Pack	PTVS-1137	6.3mm	1-2.5mm <sup>2</sup>
Piggyback Terminal Pack	PTVS-1138	6.3mm	1-2.5mm <sup>2</sup>
Ring Terminal Pack	PTVS-1139	4mm	1-2.5mm <sup>2</sup>
Ring Terminal Pack	PTVS-1140	5mm	1-2.5mm <sup>2</sup>
Ring Terminal Pack	PTVS-1141	6mm	1-2.5mm <sup>2</sup>
Terminal Cover (Supplied Single)	PTVS-1142	6.3mm	



## CRIMPING TERMINAL ASSORTMENT

Contents 150 terminals (approx.):

- 10 each of RV1.25-4, RF2-5, RV1.25-5, SV1.25-35, SV1.25-5, BV1.25, RV2-3.5, RV2-4, RV2-5, SV2-4 and BV2.
- 7 each of SV2-5, FDD1.25-7A, MDD1.25-250, FDD2-250A and MDD1.25-250.
- 5 each of RV5.5-5, RV5.5-6 and BV5.5.

Description	Part No.
150 Piece Crimping Terminal Kit	DRA18160



## CRIMPING TOOL/TERMINAL KIT

Crimping/wire stripping tool supplied with an assortment of approx. 60 insulated and 40 non insulated crimp terminals:

- Insulated terminals size: 0.5-1.0mm (red), 1.5-2.5mm (blue) and 4.0-6.0mm (yellow).
- Non-insulated terminals size: 1.5mm, 2.5mm 4.0mm and 6.0mm.

Description	Part No.
100 Piece Crimping Tool/Terminal Kit	DRA13658



Ratchet Crimping tool supplied with a wide assortment of approx. 590 insulated crimp terminals:

- Insulated terminals size: 0.5-1.0mm (red), 1.5-2.5mm (blue) and 4.0-6.0mm (yellow).

Description	Part No.
590 Piece Crimping Tool/Terminal Kit	DRA56383



## QUICK CHANGE RATCHET ACTION CRIMPING TOOL

Ratcheting crimpers. Fitted with ergonomic handles, which accommodate either single or double handed operation. The incorporated ratchet mechanism is designed to reduce the amount of pressure required for completing a crimp, which increases comfort and reduces the risk of repetitive strain injuries.

Manufactured from carbon steel and supplied with two sets of swappable jaws, suitable for crimping the following insulated terminals: red channel: 0.5-1.00mm, blue channel: 1.5-2.5mm and yellow channel: 4.0-6.0mm, and non-insulated crimps 1.5, 2.5, 6 and 10mm.

Description	Part No.
Ratchet Action Crimping Tool (220mm)	DRA64336



## CRIMPING & WIRE CUTTING TOOLS



Description	Part No.	Crimp Insulated Terminals	Crimps Uninsulated Terminals	Shears Bolts	Cuts Wires	Strips Wires
Draper Redline 4 Way Crimping Tool	DRA67652	Yes		Yes	Yes	Yes
Draper 4 Way Crimping Tool	DRA13657	Yes		Yes	Yes	Yes
5 Way Crimping Tool	PTVS-1143	Yes	Yes	Yes	Yes	Yes

## TERMINAL BLOCKS

Suitable for temperatures up to 150°C and nominal voltage of 450V.

Description	Part No.	Contact Rating	Cable Cross Section
3-Way Terminal Block	PTVS-1144	30A	6mm <sup>2</sup>
4-Way Terminal Block	PTVS-1145	40A	6mm <sup>2</sup>
6-Way Terminal Block	PTVS-1146	40A	6mm <sup>2</sup>



## CERAMIC TERMINAL BLOCKS

- Nickel plated Brass terminals.
- White ceramic body.
- Max temperature of operation: 350°C.
- Rated Voltage: 450V.
- Chemical resistant.
- Galvanised steel screws.
- 2, 3 & 4 Pole complete with central hole fixings.
- Non-flammable.
- Conforms to BS EN60998.



Part No.	PTVS-1516	PTVS-1517	PTVS-1518	PTVS-1519	PTVS-1520	PTVS-1521	PTVS-1522	PTVS-1523	PTVS-1524
Number of Poles	1	2	3	2	3	4	1	2	3
Contact Rating @350°C	5A			15A			30A		
Current Range	5 - 32A			15 - 57A			30 - 76A		
Fixing Holes	0	1 x 4mm	2 x 4mm	1 x 5mm	2 x 5mm	3 x 5mm	0	1 x 5mm	2 x 5mm

## 90°C HEAT RESISTANT 3 CORE CABLE

Twin and earth. BS 6004 PVC insulated and sheathed. Maximum temperature +90°C. Sold by the metre.

Description	Part No.
3 Core Heat Resistant Cable 1.5mm - White	PTVS-1160
3 Core Heat Resistant Cable 2.5mm - White	PTVS-1161



## H07RNF HEAVY DUTY RUBBER CABLES

BS 7919 Rubber insulated and sheathed. Maximum temperature +85°C. Sold by the metre.

Description	Part No.
3 Core Heat Resistant Cable 1mm - Black	PTVS-1162
3 Core Heat Resistant Cable 1.5mm - Black	PTVS-1163
3 Core Heat Resistant Cable 2.5mm - Black	PTVS-1164
3 Core Heat Resistant Cable 4mm - Black	PTVS-1165
3 Core Heat Resistant Cable 6mm - Black	PTVS-1166
5 Core Heat Resistant Cable 1.5mm - Black	PTVS-1167
5 Core Heat Resistant Cable 2.5mm - Black	PTVS-1168
5 Core Heat Resistant Cable 4mm - Black	PTVS-1169
5 Core Heat Resistant Cable 6.0mm - Black	PTVS-1170
5 Core Heat Resistant Cable 10mm - Black	PTVS-1171
5 Core Heat Resistant Cable 16mm - Black	PTVS-1172



## 600°C HIGH TEMPERATURE CABLE

Pure nickel strands double glass yarn lapped glass braided double silicone varnish. Temperature resistant to 600°C continuous, 750°C for short periods. Working voltage 250V at current rating/conductor temperature of 180°C: 21A / 200°C: 22A / 250°C: 23A. Sold by the metre.

Description	Part No.
High Temperature Cable 2.5mm 600°C	PTVS-1173



## 250°C HIGH TEMPERATURE CABLE

High temperature resistant nickel plated wire for use at temperature range -60° to +250°C. Sold in 10 metre rolls.

Description	Part No.
High Temperature Cable 1.5mm 250°C	PTVS-1174
High Temperature Cable 2.5mm 250°C	PTVS-1175
High Temperature Cable 4mm 250°C	PTVS-1176



## 180°C HIGH TEMPERATURE CABLE

Glass braided silicone rubber for use at operating temperature range -50° to +180°C. Sold by the metre.

Description	Part No.
High Temperature Cable 1.5mm - Blue	PTVS-1177
High Temperature Cable 1.5mm - Brown	PTVS-1178
High Temperature Cable 1.5mm - Yellow/Green	PTVS-1179
High Temperature Cable 1.5mm - White	PTVS-1180
High Temperature Cable 1.5mm - Red	PTVS-1181
High Temperature Cable 1.5mm - Black	PTVS-1182
High Temperature Cable 2.5mm - Blue	PTVS-1183
High Temperature Cable 2.5mm - Brown	PTVS-1184
High Temperature Cable 2.5mm - Yellow/Green	PTVS-1185
High Temperature Cable 2.5mm - White	PTVS-1186
High Temperature Cable 2.5mm - Red	PTVS-1187
High Temperature Cable 2.5mm - Black	PTVS-1188
High Temperature Cable 4mm - White	PTVS-1189



## GLASS FIBRE CABLE SLEEVING

Maximum temperature +350°C. Sold in 10 metre rolls.

Description	Part No.
Cable Sleevng 6mm	PTVS-1190
Cable Sleevng 8mm	PTVS-1191
Cable Sleevng 10mm	PTVS-1192
Cable Sleevng 12mm	PTVS-1193



## SILICONE CABLE SLEEVING

Maximum temperature +280°C. Sold in 10 metre rolls.

Description	Part No.
Cable Sleevng 3mm	PTVS-1194
Cable Sleevng 6mm	PTVS-1195
Cable Sleevng 8mm	PTVS-1196
Cable Sleevng 12mm	PTVS-1197
Cable Sleevng 14mm	PTVS-1198



## 13A LEADS & FUSED PLUG TOPS

13A sleeved 3 pin plug to BS1363/A.

Description	Part No.
Black Moulded 13Amp Plug with 2m Straight Lead	PTVS-1199
Black Moulded 13Amp Plug with 1.5m Coiled Lead	PTVS-1200
White Plug Fitted with 13A Fuse	PTVS-1201
Pack of 5 Black Plug Fitted with 13A Fuse	PTVS-1202
Black Rubber Plug Fitted with 13A Fuse	PTVS-1203



## COMMANDO PLUGS

IP44 rated industrial plugs.

Description	Part No.
16 Amp Blue Plug 3 Pin (2P + E)	PTVS-1204
32 Amp Blue Plug 3 Pin (2P + E)	PTVS-1205
16 Amp Red Plug 5 Pin (3P + N + E)	PTVS-1206
32 Amp Red Plug 5 Pin (3P + N + E)	PTVS-1207



## PANEL MOUNTED FUSE HOLDERS

Description	Part No.
13 Amp Fuse Holder 6.3x22mm	PTVS-1208
13Amp Fuse Holder Slotted 6.3x25mm	PTVS-1209
20 Amp Fuse Holder 6.3x32mm	PTVS-1210



## 6.3X25MM QUICK ACTING FUSES

Sold in packs of 10.

Description	Part No.
Quick Acting Cartridge Fuse 3A 6.3x25mm	PTVS-1211
Quick Acting Cartridge Fuse 5A 6.3x25mm	PTVS-1212
Quick Acting Cartridge Fuse 10A 6.3x25mm	PTVS-1213
Quick Acting Cartridge Fuse 13A 6.3x25mm	PTVS-1214



## QUICK ACTING F HBC CERAMIC 4A FUSE 5X20MM

Description	Part No.
Quick Acting Ceramic Fuse 4A	PTVS-1215





## 6.3x32MM FUSES

Sold in packs of 10.

Description	Part No.
Delay Fuse 5A 250V	PTVS-1216
Delay Fuse 10A 250V	PTVS-1217
Delay Fuse 16A 250V	PTVS-1218
Fast Blow Fuse 5A 250V	PTVS-1219
Fast Blow Fuse 10A 250V	PTVS-1220
Fast Blow Fuse 16A 250V	PTVS-1221



## MIX SIZE HBC/LBC FUSE KIT

Selection of 180 anti-surge (T) and fast blow (F) ceramic and glass fuses in sizes of 20mm, 1" and 1.25" contained in a moulded compartment storage box containing 10 of each fuse:

- 20mm HBC\* fuses in ratings of 3.15A(T), 5A(T), 10A (T).
- 20mm LBC\* fuses of 1A(T), 1A(F), 2A(F), 3A(F), 3.15A(F), 5A(T), 5A(F).
- 1" HBC fuses of 2A(F), 3A(F), 5A(F), 10A(F), 13A(F).
- 1.25" LBC fuses of 5A(F), 10A(F), 15A(F).

Description	Part No.
Boxed HBC/LBC Fuse Kit	PTVS-1222



## CABLE GLANDS

Description	Part No.	Cable Dia Range	Quantity
M20 x 1.5mm Cable Gland Grey	PTVS-1223	6-12mm	1
M20 x 1.5mm Cable Gland Black	PTVS-1224	6-12mm	1
M20 x 1.5mm Cable Gland Black	PTVS-1225	10-14mm	5



## INSULATING TAPE

Description	Part No.	Quantity
33m x 19mm Mixed Colours Insulating Tape	PTVS-1226	14
20m x 19mm Mixed Colours Insulation Tape	PTVS-1227	8
20m Roll Yellow/Green Insulation Tape	PTVS-2142	1
33m x 19mm Roll Black Insulation Tape	DRA11982	1
10m Roll Black Insulation Tape	DRA11910-1	1
10m Roll Black Insulation Tape	DRA11910	8
10m Roll Red Insulation Tape	DRA11912/1	1
10m Roll Red Insulation Tape	DRA11912	8
10m Roll Blue Insulation Tape	DRA11915/1	1
10m Roll Blue Insulation Tape	DRA11915	8



## CABLE TIES

Each pack contains an assortment of sizes.

Description	Part No.
100 Cable Ties 140mm w3.6mm	PTVS-1477



Description	Part No.
200 Piece Assorted Cable Ties	DRA90725
650 Piece Assorted Cable Ties	DRA90734
650 Piece Assorted Coloured Cable Ties	DRA90737



## ROCKER SWITCHES

Fits cut-out 30x22mm - 16(4)A 250V - max temperature 120°C.  
Contact Form: DPST.



Description	Part No.	Switch Action	Indicator lamp	Markings	Protective Cover
Amber 2 Pole Momentary NO Switch 230V 16A	PTVS-1228	Momentary	Yes	None	No
Red 2 Pole Momentary NO Switch 250V 16A	PTVS-1229	Momentary	Yes	O-I	No
Red 2 Pole Momentary NC Switch	PTVS-1230	Momentary	Yes	O-I	Yes
Green 2 Pole On/Off NO Switch with Lamp & Cover	PTVS-1231	Momentary	Yes	None	Yes
Green 2 Pole On/Off NO Switch with Lamp & Cover	PTVS-1232	Latching	Yes	None	Yes
Amber 2 Pole On/Off NO Switch with Lamp & Cover	PTVS-1233	Latching	Yes	None	Yes
Green 2 Pole On/Off NO Switch with O-I Print & Lamp	PTVS-1234	Latching	Yes	O-I	No
Green 2 Pole On/Off NO Switch with Lamp & No Print	PTVS-1235	Latching	Yes	None	No
Red 2 Pole On/Off NO Switch with O-I Print & Lamp	PTVS-1236	Latching	Yes	O-I	No
Amber 2 Pole On/Off NO Switch with O-I Print & Lamp	PTVS-1237	Latching	Yes	O-I	No
White 2 Pole On/Off NO Switch with O-I Print & Lamp	PTVS-1238	Latching	Yes	O-I	No
Green 2 Pole Changeover Switch with Lamp	PTVS-1239	Latching	Yes	None	No
Red 2 Pole Changeover Switch with Lamp	PTVS-1240	Latching	Yes	None	No
Black 2 Pole On/Off Switch	PTVS-1241	Latching	No	O-I	No

## ONE POLE ROCKER SWITCHES

16(4)A 250V - maximum temperature 120°C. Mounting size 11x30 mm.

Description	Part No.
Green One Pole Switch	PTVS-1242
Red One Pole Switch	PTVS-1243
Amber One Pole Switch	PTVS-1244
Black One Pole Switch	PTVS-1245



## ROUND LATCHING PUSH BUTTONS

Fits 25mm dia cut-out - 16A 250V - max ambient temperature 120°C.

Description	Part No.
Red 2 Pole On/Off Latching Push Button	PTVS-1246
Green 2 Pole On/Off Latching Push Button	PTVS-1247
Blue 2 Pole On/Off No Latching Push Button	PTVS-1248



## PROTECTIVE COVERS FOR SWITCHES

Description	Part No.
Protective Cover - Single	PTVS-1249
Protective Cover - Double	PTVS-1250



## FLOAT SWITCHES

Description	Part No.
Float Switch with Lead	PTVS-1251
Horizontal Float Switch 250V 0.6A	PTVS-1252
Float Switch with Lead	PTVS-1253



## TOGGLE SWITCHES

Description	Part No.
DPST On/Off Toggle Switch	PTVS-1254
On/Off Toggle Switch	PTVS-1255
Toggle Switch Boot - Pack of 5	PTVS-1256



## SPDT-NO/NC ROLLER LEVER MICROSWITCH

Rated at 16 A at 250 V at operating temperature of -40°C to +150°C.

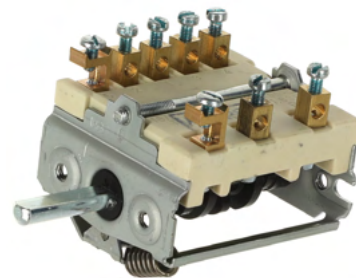
Description	Part No.
Roller Lever Microswitch 230V 16A	PTVS-1257



## EGO SELECTOR SWITCHES

Maximum temperature 150°C - D shaft  $\varnothing$  6x4.6mm.

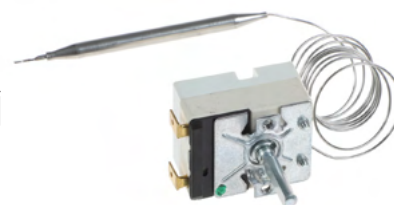
Description	Part No.
Selector Switch 0-I Positions 16A 250V	EGO42.02900.014
Selector Switch 0-6 Positions 16A 250V	EGO46.27266.813
Selector Switch 0-6 Positions 16A 250V	EGO49.27215.000



## EGO CONTROL THERMOSTAT 82-96°C

D shaft for control knob 6x4.6mm.

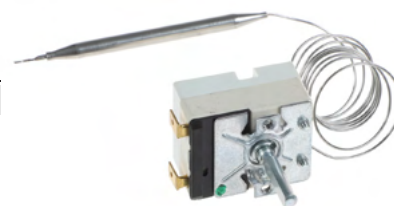
Description	Part No.	Capillary	Bulb
EGO Single Phase Thermostat 82-96°C	EGO55.13212.370	870mm	6x147mm



## EGO CONTROL THERMOSTAT 30-85°C

D shaft for control knob 6x4.6mm.

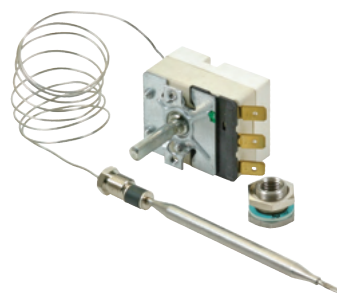
Description	Part No.	Capillary	Bulb
EGO Single Phase Thermostat 30-85°C	EGO55.13012.400	850mm	6x92mm



## EGO CONTROL THERMOSTAT

D shaft for control knob 6x4.6mm.

Description	Part No.	Capillary	Bulb
EGO Single Phase Thermostat 30-93°C	EGO55.13212.330	1170mm	6x100mm
EGO Single Phase Thermostat 0-93°C	EGO55.17212.010	845mm	6x96mm



## EGO CONTROL THERMOSTAT 30-110°C

D shaft for control knob 6x4.6mm.

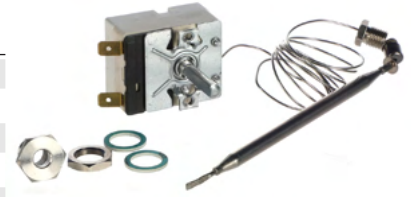
Description	Part No.	Capillary	Bulb
EGO Single Phase Thermostat 30-110°C	EGO55.19022.819	850mm	6x138mm
EGO Single Phase Thermostat 30-110°C	EGO55.17024.010	1440mm	6x94mm
EGO Single Phase Thermostat 30-110°C	EGO55.18022.010	870mm	6x100mm
EGO Single Phase Thermostat 30-110°C	EGO55.13022.010	870mm	6x113mm
EGO Single Phase Thermostat 30-110°C	EGO55.13223.010	1170mm	6x113mm
EGO Single Phase Thermostat 30-110°C	EGO55.13624.010	1470mm	6x112mm
EGO Single Phase Thermostat 30-110°C	EGO55.13229.030	3190mm (300mm insulated)	3.1x197mm



## EGO CONTROL THERMOSTATS 130-190°C

D shaft for control knob 6x4.6mm.

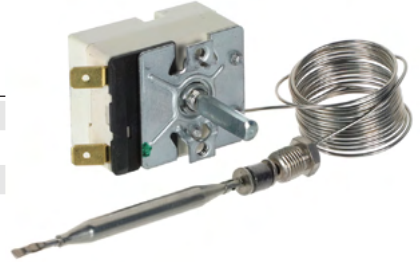
Description	Part No.	Capillary	Bulb
EGO Single Phase Thermostat 130-190°C	EGO55.13032.260	870mm	6x117mm
EGO Single Phase Thermostat 130-190°C	EGO55.18032.020	870mm	6x120mm
EGO Single Phase Thermostat 130-190°C	EGO55.18032.040	870mm	6x117mm
EGO Single Phase Thermostat 130-190°C	EGO55.34032.300	880mm	6x220mm
EGO Single Phase Thermostat 130-190°C	EGO55.17039.010	1250mm	6x120mm
EGO Single Phase Thermostat 130-190°C	EGO55.17039.120	1240mm	6x113mm



## EGO CONTROL THERMOSTATS

D shaft for control knob 6x4.6mm.

Description	Part No.	Capillary	Bulb
EGO Single Phase Thermostat 55-220°C	EGO55.13034.040	150mm	6x77mm
EGO Single Phase Thermostat 40-260°C	EGO55.13059.170	1540mm	3x160mm
EGO Single Phase Thermostat 50-300°C	EGO55.13069.500	870mm	3x160mm



Description	Part No.	Capillary	Bulb
EGO Single Phase Thermostat 85-450°C	EGO55.19082.805	870mm	4x228mm
EGO Single Phase Thermostat 50-500°C	EGO55.19082.802	900mm	4x230mm



## EGO SAFETY THERMOSTAT 230°C

Description	Part No.	Capillary	Bulb
EGO 3 Pole Safety Thermostat 230°C	EGO56.10549.510	700mm	6x78mm
EGO 1 Pole Safety Thermostat 230°C	EGO56.10549.530	2280mm (210mm insulated)	6x77mm
EGO 3 Pole Safety Thermostat 230°C	EGO55.33543.030	1170mm (1060mm insulated)	6x103mm
EGO 3 Pole Safety Thermostat 230°C	EGO55.33544.010	1470mm	6x117mm



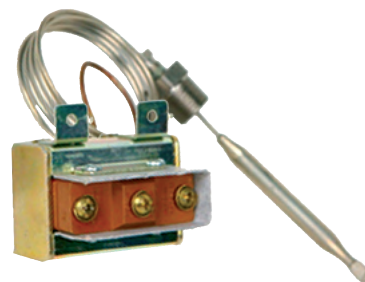
## ROBERTSHAW CONTROL THERMOSTATS

Description	Part No.	Capillary	Bulb
Robertshaw Control Thermostat 374°F/190°C	RBSRX-19-36	36"	3/8" x 4"
Robertshaw Control Thermostat 374°F/190°C	RBSRX-22-36	36"	3/8" x 5-5/8"
Robertshaw Control Thermostat 400°F/204°C	RBSRX-1-36	36"	3/8" x 5"
Robertshaw Control Thermostat 200-400°F	RBSEA5-305-48		
Robertshaw Fryer Control Thermostat 123-588°F	RBSEA5P-504-48		



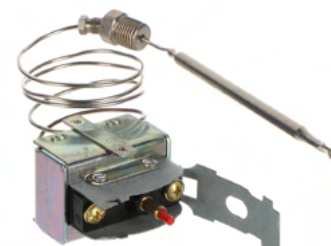
## ROBERTSHAW AUTO RESET LIMIT THERMOSTAT

Description	Part No.
Robertshaw Auto Reset Limit Thermostat	RBSLCCM-080360000



## ROBERTSHAW SAFETY THERMOSTAT 450°F/232°C

Description	Part No.	Capillary	Bulb
Robertshaw Safety Thermostat 450°F/232°C	RBSLCHM050300000	762mm	6.4x120mm



## EGO THERMOSTAT GLANDS

Description	Part No.
Thermostat Gland Ø 9.5mm Hole Ø 3/8"	EGO67.00700.100
Thermostat Gland M12 Hole Ø 6mm	EGO67.06100.100



## EGO CENTRE FIXING KIT

Description	Part No.
Thermostat Centre Fixing Brackets	EGO55.169.001



## EGO THERMOSTAT CONTROL KNOBS

50mm diameter to fit D shaft size 6x4.6mm.

Description	Part No.
Black Control Knob Marked Off/On/1/2/3/4/Full	EGO524.235
Black Control Knob Marked with Line	EGO524.413
Black Control Knob Marked 0-1-2-3	EGO524.010
Black Control Knob 30-90°C	EGO83.35601.010
Black Control Knob 30-110°C	EGO524.407
Black Control Knob 50-300°C	EGO524.403
Black Control Knob 90-200°C	EGO524.404
Black Control Knob 30-110°C	EGO524.805
Black Control Knob 60-200°C	EGO524.806
Black Control Knob 50-300°C	EGO524.807
Black Control Knob - No Markings	EGO524.808
Black Control Knob Marked 0-1-2-3-4	EGO524.059





## ELECTRONIC SWITCHES & REGULATORS

For controlling heat lamps and conventional resistive heating elements in series or parallel configurations and some inductive loads, such as transformers/motors, designed to withstand 4 times start up current. Maximum operating temperature 65°C. Supplied with control knob and label.



Description	Part No.	Load	Switch Type	Connection Type
QLC Four Position Electronic Switch	UALA11203E	15A	0-3 Positions	Cable
QVR/S Electronic Energy Regulator	UALA13202E	15A	Variable	Cable
QVR/SFRI-17A Electronic Energy Regulator	UALA13218E	17A	Variable	Cable
QVRS/TB Electronic Energy Regulator with RFI Filter	UALA14232E	10A	Variable	Terminal Block

## VARIABLE ENERGY REGULATORS

Variable phase angle power regulators for controlling single-phase mains power with integral RFI network. Supplied with terminal block, control knob and label. Fixing hole diameter: 10mm.



Description	Part No.
Variable Regulator with RFI Suppression	DIEDPVRF1/H/2
Power Regulator with Screw Terminal	DIEDPVRF1/H/3

## EGO SIMMERSTATS/ENERGY REGULATORS

Description	Part No.
EGO Energy Regulator 240V 13A Centre Fixing	EGO50.57076.070
EGO Energy Regulator 230V 13A 4 Hole and Centre Fixing	EGO50.59070.048
EGO Energy Regulator 230V 13A 2 Hole Fixing	EGO50.87071.000
EGO Energy Regulator 230V 13A 2 Hole Fixing	EGO50.57071.010
EGO Energy Regulator 240V 13A Single Pole	EGO50.56078.007



## ROBERTSHAW INFINITY SWITCHES

Description	Part No.
Robertshaw Infinite Switch Controller 240V	RBS5500-202
Robertshaw Infinite Heat Switch Kit	RBS5502-317



## DIAMOND H SIMMERSTAT

Description	Part No.
Diamond H Simmerstat 240V 13.5A	DIA41ER110B1



## AEG CONTACTORS

Coil 230V 50Hz.

Description	Part No.	Main Contact	Auxiliary Contact
Mini Contactor 4kW 3P 1NC	AEGLS05K3001-AN	3 Normally Open	1 Normally Closed
Mini Contactor 4kW 3P 1NO	AEGLS05K3010-AN	3 Normally Open	1 Normally Open
Contactor 4kW 3P 1NC	AEGLS4K01-50	3 Normally Open	1 Normally Closed 10A
Contactor 4kW 3P 1NO	AEGLS04N3010-AN	3 Normally Open	1 Normally Open
Contactor 7.5kW 3P 1NC	AEGLS7K01-50	3 Normally Open	1 Normally Open 10A
Contactor 7.5kW 3P 1NO	AEGLS07N3010-AN	3 Normally Open	1 Normally Open 10A
Contactor 7.5kW 4P	AEGLS07N4000-AN	4 Normally Open	
Contactor 11kW 3P	AEGLS11N3000-AN	3 Normally Open	



## FINDER POWER RELAYS

Description	Part No.
Relay 30A 230V	FND65.31.8.230.0300
Relay 16A 230V	FND62.83.8.230.0000



## SOLID STATE RELAY

OEM solid state relay for Rational combi ovens.

Description	Part No.
Solid State Relay	RAT40.00.453P



## RECTANGULAR INDICATOR LIGHTS

Fits cut-out 30x22mm.

Description	Part No.
Green Indicating Lamp 230V	PTVS-1260
Red Indicating Lamp 230V	PTVS-1261
Amber Indicating Lamp 230V	PTVS-1262



## ROUND INDICATOR LIGHTS

13.5mm overall dia to fit 10mm dia hole.

Description	Part No.
Green Indicating Lamp	PTVS-1263
Red Indicating Lamp	PTVS-1264
Amber Indicating Lamp 230V	PTVS-1265



14mm overall dia to fit 10mm dia hole with chrome bezel and brass backnut.

Description	Part No.
Green Indicating Lamp 230V	PTVS-1266
Red Indicating Lamp 230V	PTVS-1267
Amber Indicating Lamp 230V	PTVS-1268



14mm overall dia to fit 12mm dia hole.

Description	Part No.
Green Indicating Lamp 230V	PTVS-1269
Red Indicating Lamp 230V	PTVS-1270
Amber Indicating Lamp 230V	PTVS-1271



15mm overall dia to fit 13mm dia hole.

Description	Part No.
Green Indicating Lamp 230V	PTVS-1272
Red Indicating Lamp 230V	PTVS-1273
Amber Indicating Lamp 230V	PTVS-1274



## OVEN LAMP & BULBS

Description	Part No.
42mm Dia Oven Lamp Assembly (Fits ø 38mm Hole)	PTVS-1275
72mm Dia Oven Lamp Assembly (Fits ø 68mm Hole)	PTVS-1276
42mm Dia Oven Lamp Glass	PTVS-1277
57mm Dia Oven Lamp Glass	PTVS-1278
73mm Dia Oven Lamp Glass	PTVS-1279



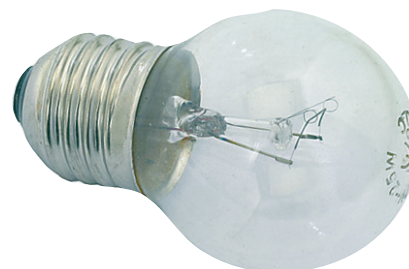
Description	Part No.
15W 240V E14 Oven Lamp Max Temperature 300°C	PTVS-1280
25W 240V E14 Oven Lamp Max Temperature 300°C	PTVS-1281



Description	Part No.
25W 220V E14 Oven Bulb 300°C	PTVS-1282
40W 220V E14 Oven Bulb 300°C	PTVS-1283



Description	Part No.
25W 230V E27 Oven Bulb 300°C	PTVS-1284



Description	Part No.
10W 12V G4 Halogen Lamp	PTVS-1285
20W 12V G4 Halogen Lamp	PTVS-1286



## PLUSLAMP BLUE UV INSECT CONTROL LAMPS

Traditional blue 368nm wavelength UV lamps. Recommended effective life 8000 hours.

Description	Part No.
8W 12" Straight Blue UVA Lamp	IOCTVX8-12
15W 12" Straight Blue UVA Lamp	IOCTVX15-12
Shatterproof 8W 12" Straight Blue UVA Lamp	IOCTVX8-12S



## PHILIPS BLUE UV INSECT CONTROL LAMPS

Traditional blue 368nm wavelength UV lamps. Recommended effective life 8000 hours.

Description	Part No.
8W 12" Straight Blue Lamp	IOCTPX8-12
Shatterproof 8W 12" Straight Blue Lamp	IOCTPX8-12S
15W 18" Straight Blue Lamp	IOCTPX15-18
Shatterproof 15W 18" Straight Blue Bulb	IOCTPX15-18S
18W 24" Straight Blue Lamp	IOCTPX18-24
Shatterproof 18W 24" Straight Blue Lamp	IOCTPX18-24S
22W Circle Lamp	IOCTPX22



## SYNERGETIC GREEN INSECT CONTROL LAMPS

Glowing green light with a 368nm-540nm dual peak wavelength to attract a wider range of insects than the traditional blue lamp. Recommended effective life 8000 hours.

Description	Part No.
11W Compact Green UVA Lamp	IOCTGX11
Shatterproof 11W Compact Green UVA Lamp	IOCTGX11S



Description	Part No.
22W Circle Green UVA Lamp	IOCTGX22
Shatterproof 22W Circle Green UVA Lamp	IOCTGX22S



## SYNERGETIC GREEN INSECT CONTROL LAMPS

Description	Part No.
15W 18" Straight Green UV Lamp	IOCTGX15-18
Shatterproof 15W 18" Straight Green UV Lamp	IOCTGX15-18S



## CATERZAP LAMP

Shatterproof UV energy saving bulb - 13W E27 for CaterZap units.

Description	Part No.
13W E27 Shatterproof UV Energy Saving Bulb	CAZCZPEPUV13-S/P-E27



## LAMP STARTERS

Description	Part No.
Philips S2 Type Starter 4-22W	IOCI154
2 Pin Glow Starter 4-80W	PTVS-1287



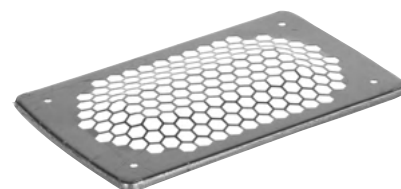
## 120MM PUSH FIT HEAT LAMPS

Overall size 150 x 90mm for 120mm long lamps.

Description	Part No.
Reflector	PTVS-1288



Description	Part No.
Reflector Mesh	PTVS-1289



Description	Part No.
Lamp Holder	PTVS-1290



Description	Part No.
300W Low Pressure Quartz Lamp	PTVS-1291
300W Low Pressure Quartz Lamp	PTVS-1292
500W Low Pressure Quartz Lamp	PTVS-1293



Description	Part No.
200W Low Pressure Quartz Lamp Jacketed	PTVS-1294
300W Low Pressure Quartz Lamp Jacketed	PTVS-1295
500W Low Pressure Quartz Lamp Jacketed	PTVS-1296



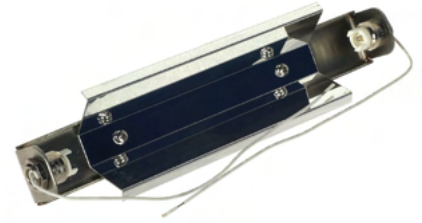
Description	Part No.
80W High Pressure Tungsten Lamp Standard	PTVS-1297
160W High Pressure Tungsten Lamp Standard	PTVS-1298
240W High Pressure Tungsten Lamp Standard	PTVS-1299
400W High Pressure Tungsten Lamp Standard	PTVS-1300





## 220MM PUSH FIT HEAT LAMPS

Description	Part No.
Lamp Holder for 220mm Long Push Fit Lamps	PTVS-1301



Description	Part No.
300W Jacketed Push Fit IR Quartz Lamp	PTVS-1302
500W Jacketed Push Fit IR Quartz Lamp	PTVS-1303



## 350MM PUSH FIT HEAT LAMPS

Description	Part No.
Lamp Holder for 350mm Long Push Fit Lamps	PTVS-1304



Description	Part No.
1000W Jacketed Push Fit IR Quartz Lamp	PTVS-1305



## 220MM HEAT LAMPS WITH LEADS

Description	Part No.
Lamp Holder for 220mm Lamps with Leads	PTVS-1306



Description	Part No.
300W IR Quartz Lamp with Leads	PTVS-1307
500W IR Quartz Lamp with Leads	PTVS-1308



Description	Part No.
200W Jacketed IR Quartz Lamp with Leads	PTVS-1309
300W Jacketed IR Quartz Lamp with Leads	PTVS-1310
500W Jacketed IR Quartz Lamp with Leads	PTVS-1311



## 350MM HEAT LAMPS WITH LEADS

Description	Part No.
Lamp Holder for 345mm Lamps with Leads	PTVS-1312



Description	Part No.
1000W IR Quartz Lamp with Leads	PTVS-1313



Description	Part No.
1000W Jacketed IR Quartz Lamp with Leads	PTVS-1314



## GANTRY HEAT LAMPS

Description	Part No.
Copper Finish Shade & Ceramic Bulb Holder	PTVS-1315
Bronze Finish Shade & Ceramic Bulb Holder	PTVS-1316



Description	Part No.
Ceramic Lamp Holder	PTVS-1317



Description	Part No.
Edison Screw IR Quartz Bulb Clear 250W 240V	PTVS-1318
Edison Screw IR Quartz Bulb Clear 300W 240V	PTVS-1319
Edison Screw IR Quartz Bulb Clear 375W 240V	PTVS-1320



Description	Part No.
Edison Screw IR Quartz Bulb Red 250W 240V	PTVS-1321



## HALOGEN LAMP HOLDER

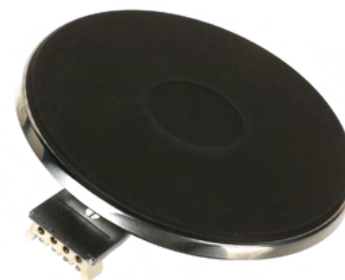
Designed for use with 1000W R7s tungsten halogen bulbs rated at 10A, 250V.

Description	Part No.
Screw Mount (M3) Halogen Lamp Holder	PTVS-1322
Halogen Lamp Fitting	PTVS-1323



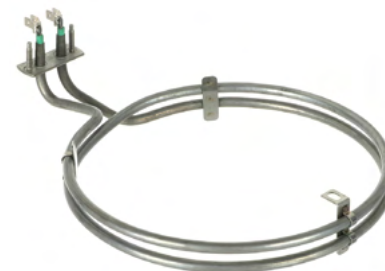
## ELECTRIC ROUND HOTPLATES

Description	Part No.
Electric Hotplate 180mm 1500W 230V	EGO12.18453.196
Electric Hotplate 180mm 2000W 230V	EGO18.18463.183
Electric Hotplate 220mm 2600W 230V	EGO12.22474.040
Electric Hotplate 220mm 2600W 230V	EGO18.22463.018



## EGO RING HEATING ELEMENTS

Description	Part No.	Outside Dia
Ring Element 1200W 230V	EGO20.17983.040	180mm
Ring Element 1800W 230V	EGO20.35390.050	190mm
Ring Element 1800W 230V	EGO20.28907.000	200mm
Ring Element 2400W 230V	EGO20.23077.000	190mm
Ring Element 2500W 230V	EGO20.17983.000	190mm
Ring Element 2500W 230V	EGO20.21693.000	190mm
Ring Element 2500W 230V	EGO20.35390.010	190mm
Ring Element 2600W 230V	EGO20.20219.050	200mm



## CERAMIC HEATING ELEMENT

Description	Part No.
Ceramic Heating Element 1000W 230V 245mm	PTVS-1324



## 3KW SINK/WATER BOILER ELEMENT

Description	Part No.
Heating Element 3Kw for Sink	PTVS-1325



## STRAIGHT ROD HEATING ELEMENTS

Description	Part No.
Rod Element 1.5Kw 6ft	PTVS-1326
Rod Element 2Kw 5ft	PTVS-1327



Description	Part No.
Compression Bush	PTVS-1328



## FAN MOTOR ASSEMBLIES

230V 50/60Hz 150mm fan diameter.

Description	Part No.
150mm Fan Motor Assembly Round Mount 22/26W	PTVS-1329
100mm Hot Cupboard Fan Motor 30W	PTVS-1330
150mm Fan Motor Assembly Round Mount 45W	PTVS-1331



Description	Part No.
150mm Fan Motor Assembly Triangle Mount 32W	PTVS-1332



## UNIVERSAL AXIAL FANS

Description	Part No.
80x80x38mm Axial Fan (with Cable) 15W	PTVS-2021
120x120x25mm Axial Fan (with Cable) 13W	PTVS-2023
120x120x38mm Axial Fan (with Cable) 20W	PTVS-2025
120x120x38mm Axial Fan (Terminal) 20W	PTVS-2026



## 127X127X38MM AXIAL FAN

Description	Part No.
127x127x38 Axial Fan Motor	EBM5958



## CABLE FOR AXIAL FANS

600mm cable with plug for axial fans with terminals.

Description	Part No.
Cable for Axial Fan Motors	EBMLZ120



## ELCO MULTIFIT FAN MOTORS

Description	Part No.
5W Multifit Fan Motor	ECO5WMULTIFIT
7W Multifit Fan Motor	ECO7WMULTIFIT
10W Multifit Fan Motor	ECO10WMULTIFIT
16W Multifit Fan Motor	ECO16WMULTIFIT
18W Multifit Fan Motor	ECO18WMULTIFIT
25W Multifit Fan Motor	ECO25WMULTIFIT
34W Multifit Fan Motor	ECO34WMULTIFIT



## CAPACITORS

Description	Part No.
Capacitor 2.5µF	PTVS-1478
Capacitor 3.15µF	PTVS-1479
Capacitor 3.5µF	PTVS-1480
Capacitor 4µF	PTVS-1481
Capacitor 5µF	PTVS-1482
Capacitor 6.3µF	PTVS-1483
Capacitor 8µF	PTVS-1484
Capacitor 10µF	PTVS-1485
Capacitor 12.5µF	PTVS-1486
Capacitor 14µF	PTVS-1487
Capacitor 16µF	PTVS-1488
Capacitor 18µF	PTVS-1489
Capacitor 20µF	PTVS-1490





## UNIVERSAL RINSE BOOSTER PUMP

Description	Part No.
Universal Rinse Pump 230V	PTVS-1333
Hanning Universal Rinse Booster Pump	PTVS-1334



## UNIVERSAL DRAIN PUMP

Description	Part No.	Inlet Diameter	Outlet Diameter
Hanning Drain Pump DPS25-040	PTVS-1335	24/30mm	24mm



Description	Part No.	Inlet Diameter	Outlet Diameter
Askoll Drain Pump	PTVS-1336	24/30mm	22mm



## DRAIN PUMP 230V 50HZ

Inlet external  $\varnothing$  22mm - outlet external  $\varnothing$  30mm.

Description	Part No.
Drain Pump 30W 230V	PTVS-1337



Inlet external  $\varnothing$  24mm - outlet external  $\varnothing$  22mm.

Description	Part No.
Drain Pump 40W 230V	PTVS-1338



## SEKO PERISTALTIC PUMPS

Description	Part No.
Peristaltic Fixed Rinse Aid Pump 4L/Hr	SEKNPG030HA2000
Peristaltic Timed Rinse Aid Pump 4L/Hr	SEKNBR030HA2000
Peristaltic Fixed Detergent Pump 1.5L/Hr	SEKNPG001HA1000
Peristaltic Fixed Detergent Pump 3L/Hr	SEKNPG0003A1000
Peristaltic Timed Detergent Pump 3L/Hr	SEKNBR0003A1000
Peristaltic Timed Detergent Pump 3L/Hr	SEKPPG0003A1000
Peristaltic Timed Rinse Aid Pump 0.4L/Hr	SEKNBM030HA2000



## GERMAC PERISTALTIC PUMPS

Description	Part No.
Germac Detergent Pump - Adjustable	PTVS-1339
Germac Rinse Aid Pump - Adjustable	PTVS-1340



## DETERGENT/RINSE AID PUMP FITTINGS

Description	Part No.
PVC Feed Tube 4x6mm 10 Metre Roll	PTVS-1341
PVC Feed Tube 5x9mm 10 Metre Roll	PTVS-1342
Peristaltic Hard Tubing 6mm	PTVS-1343



Description	Part No.
Rinse Aid Hose Set 6mm x 2 Metre	PTVS-1344
Detergent Hose Set 6mm x 2 Metre	PTVS-1345



Description	Part No.
Ceramic Weight and Filter	SEK9900108535



Description	Part No.
Foot Filter with Non Return Valve	PTVS-1346



Description	Part No.
Santoprene Detergent Tube & 4x6mm Connectors	SEK9900090057
Sekobril Rinse Aid Tube & 4x6mm Connectors	SEK9900090098
Sekobril Rinse Aid Squeeze Tube & 6mm Bayonet Connectors	SEK9900090099
Sekobril Rinse Aid Squeeze Tube & 4x6mm Connectors	SEK9900090068



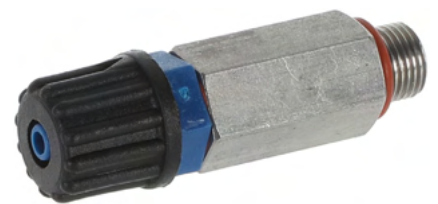
Description	Part No.
Germac Internal Rinse Aid Tube	PTVS-1347
Germac Internal Detergent Tube	PTVS-1348



Description	Part No.
Wash Tank Inlet Fitting	SEK9900107047
Tube Holder Connector Kit	SEK9900107084
Wash Tank Inlet Fitting 4x6mm Tube	SEK9900060344



Description	Part No.
Stainless Steel Non-Return Valve	SEK9900071055



Description	Part No.
Non-Return Valve Adapter (5pk)	SEK9900107118



## 90° SOLENOID VALVES 230V 50HZ

Description	Part No.
90° Single Solenoid Valve 3/4" BSPx10mm	PTVS-1349
90° Single Solenoid Valve 3/4" BSPx14mm	PTVS-1350
90° Double Solenoid Valve 3/4" BSPx10mm	PTVS-1351
90° Double Solenoid Valve 3/4" BSPx14mm	PTVS-1352
90° Triple Solenoid Valve 3/4" BSPx10mm	PTVS-1353
90° Triple Solenoid Valve 3/4" BSPx13.5mm	PTVS-1354



## 180° SOLENOID VALVES 230V 50HZ

Description	Part No.
180° Single Solenoid Valve 3/4" BSPx10mm	PTVS-1355
180° Single Solenoid Valve 3/4" BSPx14mm	PTVS-1356
180° Double Solenoid Valve 3/4" BSPx10mm	PTVS-1357
180° Double Solenoid Valve 3/4" BSPx14mm	PTVS-1358
180° Triple Solenoid Valve 3/4" BSPx10mm	PTVS-1359



## 90° ELBI SOLENOID VALVES 230V 50HZ

High quality Elbi solenoid valves for use at a maximum temperature of 90°C.

Description	Part No.
90° Elbi Single Solenoid Valve 3/4" BSPx10mm	PTVS-1360
90° Elbi Single Solenoid Valve 3/4" BSPx14mm	PTVS-1361
90° Elbi Double Solenoid Valve 3/4" BSPx10mm	PTVS-1362
90° Elbi Double Solenoid Valve 3/4" BSPx14mm	PTVS-1363
90° Elbi Triple Solenoid Valve 3/4" BSPx10mm	PTVS-1364



## 180° ELBI SOLENOID VALVES 230V 50HZ

High quality Elbi solenoid valves for use at a maximum temperature of 90°C.

Description	Part No.
180° Elbi Single Solenoid Valve 3/4" BSPx10mm	PTVS-1365
180° Elbi Single Solenoid Valve 3/4" BSPx14mm	PTVS-1366
180° Elbi Double Solenoid Valve 3/4" BSPx10mm	PTVS-1367
180° Elbi Double Solenoid Valve 3/4" BSPx14mm	PTVS-1368
180° Elbi Triple Solenoid Valve 3/4" BSPx10mm	PTVS-1369



## INLET PRESSURE REDUCER

Description	Part No.
Inlet Pressure Reducer 5.5 l/min	PTVS-1370



## OUTLET PRESSURE REDUCERS

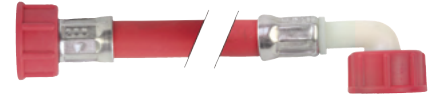
Description	Part No.
Outlet Pressure Reducer 0.5 l/min	PTVS-1371
Outlet Pressure Reducer 1.2 l/min	PTVS-1372
Outlet Pressure Reducer 2.5 l/min	PTVS-1373



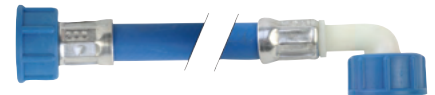
## WAREWASHER CONNECTION HOSES

With straight/angled plastic fittings.

Description	Part No.	Connection 1	Connection 2	Length	Bore
3/4" Inlet Hose Red 1.5m	QUA06002	3/4" Female Straight	3/4" Female Elbow 90°	1500mm	10mm
3/4" Inlet Hose Red 2.5m	QUAQ16003	3/4" Female Straight	3/4" Female Elbow 90°	2500mm	10mm

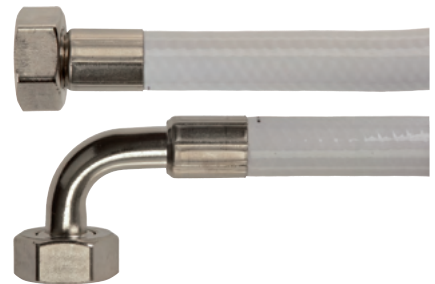


Description	Part No.	Connection 1	Connection 2	Length	Bore
3/4" Inlet Hose Blue 1.5m	QUAQ16002	3/4" Female Straight	3/4" Female Elbow 90°	1500mm	10mm
3/4" Inlet Hose Blue 2.5m	QUAWM25B	3/4" Female Straight	3/4" Female Elbow 90°	2500mm	10mm



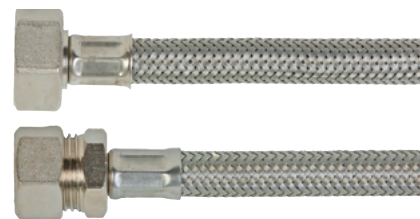
## AQUAVEND FOODSAFE HOSES

White thermo plastic foodsafe hoses.



Description	Part No.	Connection 1	Connection 2	Length	Bore	Connector Material
Aquavend Foodsafe Connection Hose	HDQ402001	3/4" Female Straight	3/4" Female Elbow 90°	1000mm	12.5mm	Brass
Aquavend Foodsafe Connection Hose	HDQ402002	3/4" Female Straight	3/4" Female Elbow 90°	1250mm	12.5mm	Brass
Aquavend Foodsafe Connection Hose	HDQ402003	3/4" Female Straight	3/4" Female Elbow 90°	1500mm	12.5mm	Brass
Aquavend Foodsafe Connection Hose	HDQ402004	3/4" Female Straight	3/4" Female Elbow 90°	2000mm	12.5mm	Brass
Aquavend Foodsafe Connection Hose	HDQ402005	3/4" Female Straight	3/4" Female Straight	1000mm	12.5mm	Brass
Aquavend Foodsafe Connection Hose	HDQ402006	3/4" Female Straight	3/4" Female Straight	1250mm	12.5mm	Brass
Aquavend Foodsafe Connection Hose	HDQ402007	3/4" Female Straight	3/4" Female Straight	1500mm	12.5mm	Brass
Aquavend Foodsafe Connection Hose	HDQ402008	3/4" Female Straight	3/4" Female Straight	2000mm	12.5mm	Brass
Aquavend Foodsafe Connection Hose	QUA61023	3/4" Female Straight	3/4" Female Elbow 90°	1200mm	10mm	Plastic
Aquavend Foodsafe Connection Hose	CCXMAVD-10-20-P	3/4" Female Straight	3/4" Female Elbow 90°	2000mm	10mm	Plastic
Aquavend Foodsafe Connection Hose	CCXMAVD-10-12-PBS	15mm Standpipe	3/4" Female Elbow 90°	1200mm	10mm	Brass/Plastic
Aquavend Foodsafe Connection Hose	CCXMAVD-10-20-B	3/4" Female Straight	3/4" Female Elbow 90°	2000mm	10mm	Brass

## BRAIDED S/S TAP CONNECTION HOSES



Description	Part No.	Connection 1	Connection 2	Length	Bore
PEX S/S Braided Tap Connection Hose	QUA402014	1/2" Female Straight	15mm Compression	300mm	13mm
PEX S/S Braided Tap Connection Hose	QUA402015	1/2" Female Straight	15mm Compression	500mm	13mm
EPDM S/S Braided Tap Connection Hose	QUAQ10207	1/2" Female Straight	15mm Compression	500mm	10mm
EPDM S/S Braided Tap Connection Hose	QUAQ10214	1/2" Female Straight	15mm Compression	500mm	10mm

## BRAIDED S/S CONNECTION HOSES

1/2" 90° elbow F/Faced x 1/2" female F/Faced braided S/S hoses.



Description	Part No.	Connection 1	Connection 2	Length	Bore
EPDM S/S Braided Appliance Connection Hose	QUA401021	1/2" Female Straight	1/2" Female Elbow 90°	1000mm	12mm
EPDM S/S Braided Appliance Connection Hose	QUA401023	1/2" Female Straight	1/2" Female Elbow 90°	1500mm	12mm
EPDM S/S Braided Appliance Connection Hose	QUA401024	1/2" Female Straight	1/2" Female Elbow 90°	2000mm	12mm

3/4" 90° elbow F/Faced x 3/4" female F/Faced braided S/S hoses.

Description	Part No.	Connection 1	Connection 2	Length	Bore
EPDM S/S Braided Appliance Connection Hose	QUA401001	3/4" Female Straight	3/4" Female Elbow 90°	1000mm	10mm
EPDM S/S Braided Appliance Connection Hose	QUA401002	3/4" Female Straight	3/4" Female Elbow 90°	1250mm	10mm
EPDM S/S Braided Appliance Connection Hose	QUA401003	3/4" Female Straight	3/4" Female Elbow 90°	1500mm	10mm
EPDM S/S Braided Appliance Connection Hose	QUA401004	3/4" Female Straight	3/4" Female Elbow 90°	2000mm	10mm
EPDM S/S Braided Appliance Connection Hose	QUA401005	3/4" Female Straight	3/4" Female Elbow 90°	1000mm	12mm
EPDM S/S Braided Appliance Connection Hose	QUA401006	3/4" Female Straight	3/4" Female Elbow 90°	1250mm	12mm
EPDM S/S Braided Appliance Connection Hose	QUA401007	3/4" Female Straight	3/4" Female Elbow 90°	1500mm	12mm
EPDM S/S Braided Appliance Connection Hose	QUA401008	3/4" Female Straight	3/4" Female Elbow 90°	2000mm	12mm
EPDM S/S Braided Appliance Connection Hose	QUA401025	3/4" Female Straight	3/4" Female Elbow 90°	1000mm	19mm
EPDM S/S Braided Appliance Connection Hose	QUA401026	3/4" Female Straight	3/4" Female Elbow 90°	1250mm	19mm
EPDM S/S Braided Appliance Connection Hose	QUA401027	3/4" Female Straight	3/4" Female Elbow 90°	1500mm	19mm
EPDM S/S Braided Appliance Connection Hose	QUA401028	3/4" Female Straight	3/4" Female Elbow 90°	2000mm	19mm

## REPLACEMENT HOSE GASKET

EPDM Gasket suitable for 3/4" hoses.

Description	Part No.
Flat EPDM Gasket ø 24x12x2 mm	PTVS-1374

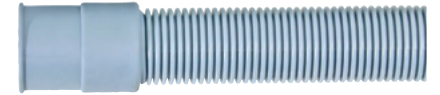
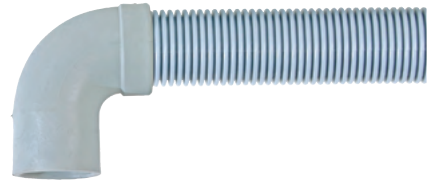
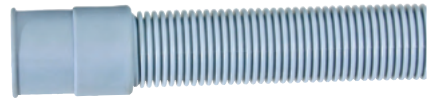
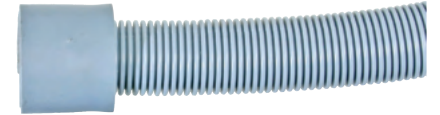




## DRAIN HOSE

Supplied with 'U' bracket for use with standpipes.

Description	Part No.
19x22mm Connections x 1.6m Long	PTVS-1375
19x22mm Connections x 2.5m Long	PTVS-1376
22x29mm Connections x 1.6m Long	PTVS-1377
22x30mm Connections x 2.5m Long	PTVS-1378
22x29mm Connections x 3.6m Long	PTVS-1379



Description	Part No.
21mm 90° Angle Connection x 1.6m Long	PTVS-1380
21mm 90° Angle Connection x 2.5m Long	PTVS-1381

## DRAIN TUNDISH

Suitable for combi oven drainage systems.

Stainless steel construction with stainless steel outlet.

Choice of 2" BSP threaded outlet or plain outlet with flexible coupling for 50mm pipework. Flexible coupling is also available separately. Dimensions 200(W)x110(D)x260(H)mm.

Description	Part No.
Stainless Steel Drain Tundish with Flexible Connection	PTVS-1382



Description	Part No.
Stainless Steel Drain Tundish with 2" BSP Connection	PTVS-1383



Description	Part No.
48-56mm Flexible Coupling (Included with 408001)	FXLPC56



## HT-SYSTEM DISCHARGE PIPE & FITTINGS

50mm push-fit pipe and fittings suitable for combi oven drainage systems. Manufactured in polypropylene with low inflammability and hot water/chemical resistance. Meets requirements of DIN EN 1451-1, DIN 19560-10, DIN 4102 B1. Available as kits containing all parts required for the installation of a combi oven in most circumstances or as individual items.

Description	Part No.
Combi Drain Installation Kit - Comprising of 50mm pipe and fittings suitable for all sizes of combi ovens (no water hose supplied)	RAT8720.1031
Combi Service Installation Kit - Comprising of 2m long water hose with 50mm pipe and fittings suitable for all sizes of combi ovens	RAT60.70.464
50mm HT-System Pipe 250mm	RAT2070.0054
50mm HT-System Pipe 500mm	RAT2070.0052
50mm HT-System 87° Elbow	RAT2070.0043
50mm HT-System 45° Elbow	RAT2070.0047
50/50mm HT-System Tee	RAT2070.0048
50/50mm HT-System Double Socket	RAT2070.0051
40/50mm HT-System Reducer	RAT50.01.967



## WASTE KIT AND STANDPIPE

Stainless steel and plastic.

Description	Part No.
Combined Sink Waste Standpipe/Strainer 300mm Height	PTVS-1506



## UNSLOTTED BASIN WASTE

Comes with plug.

Description	Part No.
Unslotted Basin Waste	PTVS-1384



## BRASS COMPRESSION PIPE FITTINGS

Description	Part No.
15mm Compression Stop Cap	PTVS-1385
22mm Compression Stop Cap	PTVS-1386



Description	Part No.
15mm Compression Coupler	PTVS-1387
22mm Compression Coupler	PTVS-1388



Description	Part No.
Adaptor - 15mm Compression to 1/2" BSP Male	PTVS-1389
Adaptor - 15mm Compression to 3/4" BSP Male	PTVS-1390
Adaptor - 22mm Compression to 1/2" BSP Male	PTVS-1391



Description	Part No.
Equal Tee 15mm	PTVS-1392
Equal Tee 22mm	PTVS-1393



Description	Part No.
15mm Compression Equal Elbow	PTVS-1394
22mm Compression Equal Elbow	PTVS-1395



Description	Part No.
15mm Comp x 1/2" BSP 90° Elbow Wallplate	PTVS-1396
22mm Comp x 3/4" BSP 90° Elbow Wallplate	PTVS-1397



## WASHING MACHINE TAPS

Supplied with a red and a blue lever for hot or cold water supplies.

Description	Part No.
Washing Machine Tap 15mm x 3/4" BSP	PTVS-1398
Washing Machine Tap with Check Valve 15mm x 3/4" BSP	PTVS-1399



## Y PIECE CONNECTORS

Description	Part No.
Plastic 2 Way Y Connector 3/4"F x 3/4"M x 3/4"M	PTVS-1400



Description	Part No.
Brass 2 Way Y Connector 3/4"F x 3/4"M x 3/4"M	PTVS-1401



## T&S PRE-RINSE SPRAY VALVES AND HOSES

Suitable for T&S and other popular pre-rinse units.

Description	Part No.
Standard Spray Valve 5.375 Litres/Minute	TSBUK-0107



Description	Part No.
Low Flow Spray Valve 2.46 Litres/Minute	TSBEB-0107-C



Description	Part No.
Service Kit for Standard Spray Valve UK-0107	TSBUK-10K



Description	Part No.
40" Long Hose for Pre-Rinse Unit with Handle	TSBUK-0040-H
42" Long Hose for Pre-Rinse without Handle	TSBB-0042-H2A



Description	Part No.
Blue Grip Handle for Rinse Hose Assembly	TSB011482-40



Description	Part No.
Hot Ceramic Cartridge Assembly	TSB013787-45



Description	Part No.
Cold Ceramic Cartridge Assembly	TSB013788-45



Description	Part No.
Lever Handle Kit	TSBE-HDL-L



Description	Part No.
Swivel Nut	TSB013839-25



Description	Part No.
Lock Washer	TSB014200-45



Description	Part No.
O-Ring for Pop & Lock	TSB001062-45



Description	Part No.
12" (305mm) Wall Bracket	TSBB-0109-03





Description	Part No.
Overhead Spring	TSB000888-45



Description	Part No.
Spring Holder	TSB000821-40



Description	Part No.
Washer for Spray Valve Assembly	TSB010476-45



Description	Part No.
Hold Down Ring	TSB000907-45



Description	Part No.
Blue Handle for Spray Valve Assembly	TSB011454-45



Description	Part No.
Nut for Spray Valve Handle	TSB003198-45



Description	Part No.
Screw for Spray Valve Handle	TSB003199-45



Description	Part No.
Ring for Spray Head	TSB011475-45



Description	Part No.
Spray Face	TSB017288-45



Description	Part No.
Spray Face Screw	TSB000913-45



Description	Part No.
Bonnet Assembly	TSB002856-40



## MECHLINE AQUAJET PRE-RINSE SPARE PARTS

Description	Part No.
Complete Pre-Rinse Spray Gun Assembly - Standard Rose Head	AQJAJSG019



Description	Part No.
Complete Pre-Rinse Spray Standard Gun Assembly c/w Water Saving Face Plate	AQJAJSG019W



Description	Part No.
Complete Pre-Rinse Spray Gun Assembly - Angled Rose Head	AQJAJSG019A



Description	Part No.
Complete Pre-Rinse Spray Gun Assembly - Fan Blade Head	AQJAJSG019F



Description	Part No.
Complete Pre-Rinse Spray Gun Assembly - Eco Water Saving Head	AQJAJSG019ECO



Description	Part No.
38" Complete Inner & Outer Hose Assembly c/w End Fittings	AQJAJHA010
24" Complete Inner & Outer Hose Assembly c/w End Fittings	AQJAJHA010-SHORT
38" Complete Inner & Outer Hose Assembly c/w 1/2" BSP End Fittings	AQJAJHA010-BSP
Hose Assembly Washer Pack (3 Washers)	AQJAJWP015



Description	Part No.
Hose Adaptor	AQJAJA044
1/2" BSP F Hose Adaptor	AQJAJA044BSP



Description	Part No.
Faceplate & Screw	AQJAJFP022
Water Saving Faceplate (For Std Rose Head & Angled Head Guns Only)	AQJAJFP022L



Description	Part No.
Rubber Ring	AQJAJRR021



Description	Part No.
Trigger (Includes Screw)	AQJAJGT023



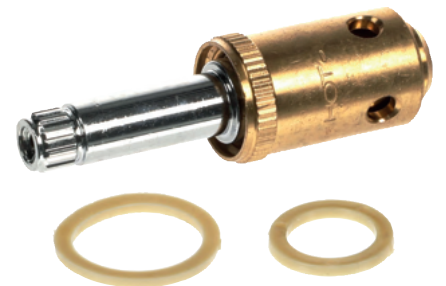
Description	Part No.
Spray Gun Valve Repair Kit	AQJAJGRK041



Description	Part No.
Spray Gun Valve Spring	AQJAJ-SPRING



Description	Part No.
1 Valve Body (Fits Hot on Lever Body or Hot & Cold on Cross Head Body)	AQJAJVCH028
1 Valve Body (Fits Cold Only) for Lever Head Body	AQJAJVC029



Description	Part No.
Valve Bonnet & Packing Gland	AQJAJBC047



Description	Part No.
Pair (Hot and Cold) 63mm Chrome Lever	AQJAJLT026



Description	Part No.
2 Red, 2 Blue Inserts & 2 Screws	AQJAJTD027



Description	Part No.
Bowl Filler Body	AQJAJBF040



Description	Part No.
1 Valve Body	AQJAJVBF042



Description	Part No.
Bowl Filler Spout 150mm (6")	AQAJRS031
Bowl Filler Spout 300mm (12")	AQAJRS035

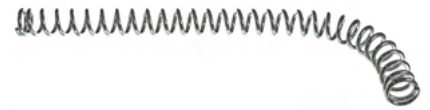




Description	Part No.
Spout O-Ring Pack (x2)	AQJAJOP016



Description	Part No.
Outer Support Spring	AQJAJOS009



Description	Part No.
Wall Bracket (Length 300mm Dia 17.15mm)	AQJAJWB017



## BALL VALVE

Description	Part No.
Ball Valve 1/2" BSP	PTVS-1402



Description	Part No.
Plastic Ball Float	PTVS-1403



## CONTRACT TAPS

Chrome plated brass with brass backnut and BSP inlets.  
WRAS approved.

Description	Part No.
Lever Action 1/2" Mixer Tap	DVADLTSPEC105
Lever Action 1/2" Sink Taps	DVADLTSPEC103
Lever Action Sink Taps With 6" Levers	DVADLV103
Lever Action 1/2" Basin Taps	DVADLTSPEC101
Lever Action Basin Taps With 6" Levers	DVADLV101



## SPARE PARTS FOR CONTRACT TAPS

Description	Part No.
Pair of Replacement Cartridges for Lever Action Taps	DVACDV001
Pair of 3" Lever Handles	DVADLV001



## NON RETURN VALVE

Description	Part No.
Brass Non Return Valve 15mm	DVANRV15



## TOMLINSON ES SERIES DRAW OFF TAPS

Chromed brass body with 1-1/32"-14 UNS threads and black nylon bonnet. Fits 1/2 NPS union nut or wing nut shanks.  
Flow rate 7.31 litres/min at a pressure of 14 psi / 0.93 bar.

Description	Part No.
ES Series Self Closing Tap Kit	TOM1000484
ES Series Upper Tap Assembly	TOM1007754



## TOMLINSON S SERIES DRAW OFF TAPS

Chromed brass body with 1-1/32"-14 UNS threads and metal threaded black nylon bonnet. Fits 1/2 NPS union nut or wing nut shanks. Flow rate 7.92 litres/min at a pressure of 14 psi / 0.93 bar.

Description	Part No.
S Series Self Closing Tap - Black	TOM1000437
S Series Upper Tap Assembly - Black	TOM1001013
S Series Upper Tap Assembly - Blue	TOM1012043



## TOMLINSON DRAW OFF TAP PARTS

For S, S-1 and ES series draw off taps.

Description	Part No.
Seat Cup	TOM1918304



Description	Part No.
Standard Spring	TOM1902033
Heavy Duty Spring	TOM1909491



Description	Part No.
Handle Pin	TOM1902041



## BRITA PURITY C WATER FILTERS

Replacement cartridges for Purity C water filter systems.

Description	Part No.
Replacement Purity C50 Cartridge 831 Litres	BRI1002730
Replacement Purity C150 Cartridge 2086 Litres	BRI102828
Replacement Purity C300 Cartridge 3464 Litres	BRI102826
Replacement Purity C500 Cartridge 5889 Litres	BRI1002045
Replacement Purity C1100 Cartridge 9960 Litres	BRI1012446



Purity C Filter Heads with 3/8" connections. Adapter can be used for 3/4" hose fittings.

Description	Part No.
Purity Filter Head With Fixed 30% Bypass	BRI1002952
Purity C Head With 0-70% Variable Bypass	BRI1013637



## BRITA PURITY C iQ WATER FILTERS

Replacement cartridges for Purity C iQ water filter systems.

Description	Part No.
Purity C150 iQ Quell ST CU	BRI1044845
Purity C300 iQ Quell ST CU	BRI1044850
Purity C500 iQ Quell ST CU	BRI1044856
Purity C1100 iQ Quell ST CU	BRI1044862



Purity C iQ Filter Heads with 3/8" connections. Adapter can be used for 3/4" hose fittings.

Description	Part No.
Purity C iQ Head G3/8 CU GB	BRI1043653



## BRITA PURITY C STEAM WATER FILTERS

Replacement cartridges for Purity C Steam water filter systems. Can only be used with the Purity C Steam Filter Head.

Description	Part No.
Replacement Purity C Steam C500 Cartridge 4675 Litres	BRI1023320
Replacement Purity C Steam C1100 Cartridge 7907 Litres	BRI1023328



Purity C Steam Filter Head with 3/8" connections. Adapter can be used for 3/4" hose fittings.

Description	Part No.
Purity C Steam Filter Head With Variable Bypass	BRI1023325



## BRITA PURITY C SERVICE CARTRIDGE

Provides a convenient method for flushing vending and coffee machines with cleaning fluids. The cartridge can be filled with cleaning fluid of choice and replaces any size PURITY C filter.

Description	Part No.
Purity C Service Cartridge	BRI1006579



## BRITA PURITY WATER FILTER CARTRIDGES

Replacement Purity Quell ST filter cartridges.

Description	Part No.
Replacement ST450 Cartridge 3807 Litres	BRI273000
Replacement ST600 Cartridge 6337 Litres	BRI273200
Replacement ST1200 Cartridge 11596 Litres	BRI273400



Replacement Purity Steam filter cartridges.

Description	Part No.
Replacement Steam 600 Cartridge 5771 Litres	BRI1000252
Replacement Steam 1200 Cartridge 10800 Litres	BRI1000231



Replacement Purity Clean filter cartridges.

Description	Part No.
Replacement Clean 1200 Cartridge 12000 Litres	BRI315645
Replacement Clean Extra 1200 Cartridge 5000 Litres	BRI1008197



## BRITA WATER FILTER ACCESSORIES

Description	Part No.
Digital Flowmeter	BRI1033041



Description	Part No.
Reinforced Flexible Hose 3/8" - 3/4" X 1500mm Long	BRI1007706
Reinforced Flexible Hose 3/8" - 3/8" X 1500mm Long	BRI1007714



Description	Part No.
Purity Hose Set with Service Valve	BRI1007734



Description	Part No.
Inlet/Outlet Adaptor 3/8" To 3/4"	BRI1002574
Inlet/Outlet Adaptor 1" To 3/4"	BRI363000



Description	Part No.
Reducer Kits – 3/8" Female Thread 3/4" Male Thread	BRI1000898



Description	Part No.
Purity Non Return Valve 3/8"	BRI1000639



Description	Part No.
Tee Piece Connector Assembly	BRI1002584





## WATER HARDNESS TEST KITS

Recommended to identify the carbonate hardness of the on site water supply. Temporary hardness kit required for combi ovens/beverage machines etc. Total hardness required for glass/dishwashers when using Clean/Clean Extra filters.

Description	Part No.
Brita Temporary Hardness Test Kit	BRI710800
Brita Total Hardness Test Kit	BRI536754



## 3M FILTER CARTRIDGES

Replacement Aqua-Pure Cartridges.

Description	Part No.
AP2-C401-SG Filter Cartridge	MMM7000051326
AP2-C405-SG Filter Cartridge	MMM7000051324
AP3-C765-S-E Filter Cartridge	MMM7100017170



Replacement High Flow Series Cartridge.

Description	Part No.
HF20-SE Filter Cartridge	MMM7100017185
HF25-S Filter Cartridge	MMM7000050414
HF40-S Filter Cartridge	MMM7100008238
HF45-S Filter Cartridge	MMM7000050884



Bracketed head for use with SQC (Sanitary quick change) cartridges such as the SGP and HF range.

Description	Part No.
VH3 Filter Head	MMM7000050794



## INLINE WATER FILTER

For the removal of chlorine, bad tastes, odours and the prevention of scale. Capacity 6000 litres.

Description	Part No.
Monarch Inline Water Filter	MNWCTO-S

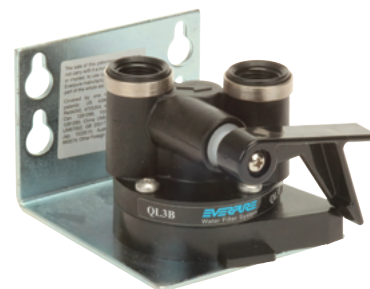


## EVERPURE REPLACEMENT FILTER CARTRIDGES

Description	Part No.
Everpure 4CB5-S Filter Cartridge	EVE9617-26
Everpure 4C Filter Cartridge	EVE9601-00
Everpure 4H Filter Cartridge	EVE9611-00
Everpure ESO 6 Filter Cartridge	EVE9607-10
Everpure MH2 Filter Cartridge	EVE9613-26
Everpure MC Filter Cartridge	EVE9612-55



Description	Part No.
Everpure QL3B Filter Head	EVE4312-13
Everpure QL2B Filter Head	EVE4252-16



## INSTANTA WATER FILTER CARTRIDGES

Description	Part No.
Replacement Filter Cartridge with Filter Monitor Reset Key	INSAQ2
Replacement Filter Cartridge without Filter Monitor Reset Key	INSAQ3
Water Filter System - No Scale Monitor	INSAQ4
Replacement Cartridge with Grey Label	INSAQ35
Replacement Cartridge with Blue Label	INSAQ35A



## LINCAT WATER FILTER CARTRIDGES

Description	Part No.
Replacement Filter Cartridge For Filterflow FX Water Boilers	LCTFC02
Replacement Filter Cartridge For Filterflow Water Boilers	LCTFC04



## MANUAL WATER SOFTENER

Stainless steel cylinder with 3/4" water connections.  
Supplied with resin.

Description	Part No.
DVA Manual Water Softener 8 Litres	PTVS-1491
DVA Manual Water Softener 12 Litres	PTVS-1492
DVA Manual Water Softener 16 Litres	PTVS-1493



Description	Part No.
3/4" Tap For Water Softener	PTVS-1494



Description	Part No.
Water Softener Complete Cap	PTVS-1495



## WATER SOFTENER SALT

Salt in granular form is suitable for manual water softeners. Salt in tablet form is recommended for automatic water softeners.

Description	Part No.
Granular Salt 10KG	DIRGRAN10KG
Granular Salt 25KG	DIRGRAN25KG
Salt Tablets 10KG	DIRTAB10KG
Salt Tablets 25KG	DIRTAB25KG



## FERNOX DS-3 DESCALER

Powerful acid limescale remover that dissolves up to 50% of its own weight of limescale. Safe to use with metals, PVC, ABS rubber polythene and most plastic pipework. Colour change indicated when exhausted.

Description	Part No.
DS-3 Descaler 2kg tub	FEX61027



## EVERPURE SCALEKLEEN DESCALER

Description	Part No.
ScaleKleen Descaler 200g Sachet	EVE9798-33



Description	Part No.
ScaleKleen Descaler 1kg Tub	EVE9798-35



## HOSE CLAMPS

Description	Part No.
Hose Clamp 10-16mm	PTVS-1404
Hose Clamp 16-25mm	PTVS-1405
Hose Clamp 25-40mm	PTVS-1406
Hose Clamp 32-50mm	PTVS-1407
Hose Clamp 60-80mm	PTVS-1408



Hose Clamp Set 10mm to 60mm.

Packaging; Plastic Bags.

Contents: 10-16mm x 10, 12-20mm x 10, 16-27mm x 10, 20-32mm x 10, 25-40mm x 10, 40-60mm x 10.



Description	Part No.
Hose Clamp Set 10mm to 60mm	PTVS-1409

Hose Clamp Set 16mm to 40mm.

Packaging; Assortment Case.

Contents: 16mm x 8, 22mm x 6, 25mm x 4, 28mm x 2, 35mm x 2, 40mm x 4.

Description	Part No.
Hose Clamp Set 16mm to 40mm	PTVS-1410

## O-RING & GASKET SETS

Description	Part No.	Sizes
425 Piece O-Ring Set	PTVS-1411	9.5x1.9 up to 27x3.6
880 Piece O-Ring Set	PTVS-1412	8.7x1.9 up to 30.2x3.6
330 Piece Fibre Washer Set	PTVS-1413	



## FASTENER SETS

Description	Part No.
305 Piece Self Tapping Screw Set	DRA61275
366 Piece Pan Head Screw & Nut Set	DRA61272



Description	Part No.
500 Piece Mixed Bolts, Nuts & Washers	PTVS-1414
1000 Piece Mixed Washer Set	PTVS-1415



## DRAPER HAND RIVETER KIT

For 2.4, 3.2, 4.0 and 4.8mm aluminium alloy rivets. Cast aluminium body and carbon steel moving handle with moulded grips. Supplied with 100 rivets (approximately) in mixed sizes.

Description	Part No.
Draper Hand Riveter Kit	DRA27843



## RIVET PACKS

Aluminium rivets with steel mandrel. 50 rivets per card.

Description	Part No.
2.4x7mm Rivets - 50 Per Card	DRA13554
3.2x10.8mm Rivets - 50 Per Card	DRA13555
4x5.6mm Rivets - 50 Per Card	DRA13556
4.8x5.8mm Rivets - 50 Per Card	DRA13557



Description	Part No.
900 Piece Rivet Set	PTVS-1416



## 100MM HEAVY DUTY CASTOR

Description	Part No.
100mm Heavy Duty Castor	PTVS-1417



Description	Part No.
Mounting Plate	PTVS-1418



## 75MM BUDGET CASTOR WITH EXPANDER

75mm diameter grey rubber/nylon wheel.

Expander for 30mm square tube.

Effective height 128mm.

Load capacity 85kg.

Description	Part No.
75mm Braked Castor - Expander	PTVS-1419
75mm Unbraked Castor - Expander	PTVS-1420



## 100MM BUDGET CASTOR WITH EXPANDER

100mm diameter grey rubber/nylon wheel.

Expander for 30mm square tube.

Effective height 128mm.

Load capacity 85kg.

Description	Part No.
100mm Braked Castor - 30mm Square Expander	PTVS-1421
100mm Unbraked Castor - 30mm Square Expander	PTVS-1422



100mm diameter grey rubber/nylon wheel.

Expander for 25mm round tube.

Effective height 128mm.

Load capacity 85kg.

Description	Part No.
100mm Braked Castor - 25mm Round Expander	PTVS-1423
100mm Unbraked Castor - 25mm Round Expander	PTVS-1424



## 100MM BUDGET CASTOR WITH MOUNTING PLATE

100mm diameter grey rubber/nylon wheel.

76x76mm mounting plate.

Effective height 132mm.

Load capacity 85kg.

Description	Part No.
100mm Braked Castor - Mounting Plate	PTVS-1425
100mm Unbraked Castor - Mounting Plate	PTVS-1426



Description	Part No.
100mm Braked Castor - Mounting Plate	PTVS-1427
100mm Unbraked Castor - Mounting Plate	PTVS-1428





## 125MM BUDGET CASTOR WITH EXPANDER

Grey thermoplastic wheel.

Effective height 150mm.

Description	Part No.
125mm Braked Castor - Expander	PTVS-1429
125mm Unbraked Castor - Expander	PTVS-1430



## 100MM CHROME PLATED SWIVEL BOLT CASTOR

Chrome plated with non mark TUTPR wheel.

Effective height 130mm.

90kg load rating.

If 4 castors are used safe working load is 270kg overall.

Description	Part No.
100mm Braked Castor - Swivel Bolt	PTVS-1431
100mm Unbraked Castor - Swivel Bolt	PTVS-1432



## 125MM CHROME CASTOR WITH MOUNTING PLATE

Chrome plated with black rubber/nylon wheel.

Effective height 155mm.

Load capacity 85kg.

Description	Part No.
125mm Braked Castor - Mounting Plate	PTVS-1433
125mm Unbraked Castor - Mounting Plate	PTVS-1434



## LEG EXPANDERS

Description	Part No.
Round Expander For 19 - 21.5mm Tube	PTVS-1435
Round Expander For 21.5 - 24mm Tube	PTVS-1436
Round Expander For 24 - 27mm Tube	PTVS-1437
Round Expander For 27 - 30mm Tube	PTVS-1438
Round Expander For 31 - 35mm Tube	PTVS-1439



Description	Part No.
Square Expander For 21.5 - 24mm Sq Leg	PTVS-1440
Square Expander For 24 - 27mm Sq Leg	PTVS-1441
Square Expander For 27 - 30mm Sq Leg	PTVS-1442
Square Expander For 32 - 35mm Sq Leg	PTVS-1443
Square Expander For 36 - 40mm Sq Leg	PTVS-1444



## ZINC FLANGED FEET

To fit 30mm square tube.

Height - 64-99mm.

Tube Thickness - 1.2mm or 1.5mm.

Vertical Load - 1250kg.

Description	Part No.
Zinc Flanged Foot	PTVS-1507
Nickel Plated Zinc Flanged Foot	PTVS-1508

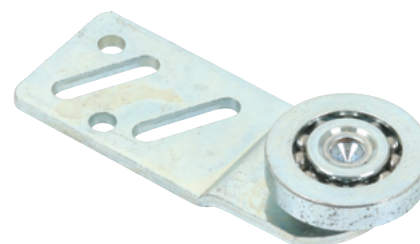


## CABINET ROLLERS

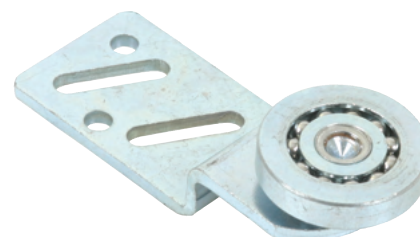
Description	Part No.
Aluminium Door Track 2000mm Long	PTVS-1509
Aluminium Door Track 3000mm Long	PTVS-1510



Description	Part No.
Straight Rear Door Sheave Steel Roller & Ball Bearing	PTVS-1511



Description	Part No.
Offset Front Door Sheave Steel Roller & Ball Bearing	PTVS-1512



## HOT CUPBOARD ROLLERS

Description	Part No.
Hot Cupboard Roller	MOF0502



## HOT CUPBOARD ROLLERS

Description	Part No.
Hot Cupboard Roller	MOF0502



Description	Part No.
Axle For Hot Cupboard Roller	MOF0503



## GUIDE PIN FOR SLIDING DOORS

Description	Part No.
Guide Pin	PTVS-1513



## DISHWASHER RACKS

Description	Part No.
Open Glass/Cup Rack 500mm	PTVS-1445
Cutlery Rack 500mm	PTVS-1446
Pegged Plate Rack 500mm	PTVS-1447
Tray Rack 500mm	PTVS-1448
8 Compartment Cutlery Basket	PTVS-1449



## TESTO 320 FLUE GAS ANALYSER

The Testo 320B Flue Gas Analyser is ideal for carrying out installation and maintenance work on catering equipment. In conjunction with the supplied flue gas probe, the compact flue gas analyser can be used to measure flue gas, draught, pressure, ambient CO and differential temperature. In the set you also get practical accessories, to make handling easier.

Temperature measurement range: -40 to 1200°C.

Dimensions: 240 x 85 x 65mm.

Weight: approximately 573g.

Power: rechargeable battery 3.7V/2400 mAh, mains 6V/1.2A.



320B Flue Gas Analyser (Standard Set).

Includes Testo 320B Flue Gas Analyser, USB Charger, Flue Gas Probe 180Mm/300Mm P-Type D=6Mm And Case.

Description	Part No.
320B Flue Gas Analyser (Standard Set)	TES0563322380

320B Flue Gas Analyser (Advanced Set With Printer).

Includes Testo 320B Flue Gas Analyser, Incl. Case, USB Charger, Flue Gas Probe 180Mm/300Mm P-Type D=6Mm, IRDA Printer, Hose Connection Set, Temp Set And Spare Particle Filters.

Description	Part No.
320B Flue Gas Analyser (Advanced Set With Printer)	TES0563322381

## TESTO 327 FLUE GAS ANALYSER

The Testo 327 Flue Gas Analyser is your introductory instrument to flue gas analysis. It measures combustion efficiency, °C, O<sub>2</sub>, CO<sub>2</sub>, CO and flue draught. The strong LED background light in the 4 line display guarantees an easy-to-read display even if lighting conditions are unfavourable. The analyser stands out on account of its easy menu navigation and ergonomic housing as well as its durability.

Temperature measurement range: -40 to 600°C.

Dimensions: 216 x 68 x 47mm.

Weight: approximately 500g.

Power: rechargeable battery 3.7V/2400 mAh, mains 6V/1.2A.



327 Flue Gas Analyser (Standard Set).

Includes Testo 327 Flue Gas Analyser, Rechargeable Battery and Calibration Protocol, Flue Gas Probe (180Mm X 6Mm Diameter), Carry Case.

Description	Part No.
327 Flue Gas Analyser (Standard Set)	TES0563320380

## 327 Flue Gas Analyser (Advanced Set With Printer).

Includes Testo 327 Flue Gas Analyser, Rechargeable Battery And Calibration Protocol, Flue Gas Probe (180Mm X 6Mm Diameter), Differential Hose Kit, Differential Temperature Kit, Testo Infrared Printer (0554 0547), Carry Case.

Description	Part No.
327 Flue Gas Analyser (Advanced Set With Printer)	TES0563320381

## CONSUMABLES FOR TESTO FLUE GAS ANALYSERS

Description	Part No.
6 Rolls of Thermal Paper for IR Printer	TES05540568



Description	Part No.
10 Spare Particle Filters	TES05540040



## TPI 709R FLUE GAS ANALYSER

TPI 709R Flue Gas Combustion Efficiency Analyser is designed to measure CO, O<sub>2</sub>, temperature & pressure and calculate CO<sub>2</sub> (in a flue), CO/CO<sub>2</sub> ratio, efficiency and excess air. Using the respective probe, the CO<sub>2</sub> and CO content in the surroundings can also be measured. All the features needed for measuring the performance of gas systems in commercial catering equipment, including COMCAT 5 forced draft burners, to ensure compliance with Gas Safety (Installation and Use) Regulations 1998. Long life O<sub>2</sub> & CO sensors, a 6 year warranty period and fixed price annual servicing mean low cost of ownership over the long term. Water trap and disc filter on the thermocouple gas sampling probe provides complete protection from water ingress into the instrument. In-line pump protection filter stops dust/dirt ingress into the pump, which is the main cause of pump/analyser failure.

Kits available with Optional IR printer, temperature pipe clamps, CPA1 probes and gas leak detector.

Operating Temperature: -10 to +50°C. Fuels: natural gas, LPG, light oil, heavy oil. OPT 1 (bituminous coal), OPT 2 (anthracite coal). OPT 3 (coke), OPT 4 (butane), OPT 5 (dry wood).

OPT 6 (bagasse). Display: backlit LCD. Data Storage: 50 sets of readings. Time & Date: 24 hour real time clock. Dimensions: 200 x 90 x 60mm. Weight: approximately 500g. Battery: rechargeable Ni-MH battery 6 hour life. Battery Charger: 115 or 230V 50/60Hz.

Description	Part No.
709R Combustion Analyser Std Kit	TPI709RKIT



### TPI A740 INFRA RED THERMAL PRINTER

Used with selected TPI instruments to print hard paper copies of measurement data. Adjustable contrast (low, norm, high). 18 inch maximum transmitting distance. Operates on 4 AA batteries or optional AC adapter.

Description	Part No.
A740 Infra Red Thermal Printer	TPIA740



Description	Part No.
10 Thermal Paper Rolls for IR Printer	TPIA746

### TESTO 315-3 CO/CO AMBIENT AIR MONITOR

Provides parallel and direct CO/CO measurement in ambient air according to EN 50543. It is ideal for measuring air quality around gas heated equipment in a commercial catering premises and ensuring safe working conditions.

Description	Part No.
315-3 Ambient CO/CO_Air Monitor	TES06323153



### TESTO 535 DIGITAL CO METER

Compact CO2 measuring instrument that can connect to the Testo Smart App.

- Simple, fast and precise measurement of CO2 concentration.
- Audible alarm sounds if a limit value is exceeded.
- Fast in-app configuration, graph history, second screen and measurement data memory in the testo Smart App.
- High reproducibility of measurement results due to long-term stable infrared sensor technology.
- Timed and multi-point mean calculation.

Description	Part No.
Testo 535 Digital CO_ measuring instrument with App connection	TES05630535



### MASTERCOOL INFRARED THERMOMETERS

Description	Part No.
Infrared Thermometer with Laser	MCL52224-A





Description	Part No.
Infrared Thermometer with Multi Laser	MCL52224-D



Description	Part No.
Dual Temp Plus Infrared Thermometer	MCL52225-A



## MASTERCOOL DIGITAL THERMOMETER

Waterproof digital thermometer that accurately measures in °C or °F over the temperature range of -50 to +300°C with a resolution of 0.1°. Display accuracy of ±1°C between -20 to +150°C and ±3°C between -50 to -20°C and +150 to +200°C. High/low temperature alarm setting with resolution of 1° across the full range.

Description	Part No.
Digital Thermometer	MCL52229



## ETI MINI RAYTEMP INFRARED THERMOMETER

Compact, lightweight and low cost infrared thermometer. Simply aim and pull the trigger to display the temperature of the item being measured. Suitable for a wide range of food and industrial applications where contact with the item to be measured is an issue.

- Temperature range: -50 to 330°C with a 0.1 °C resolution.
- Accuracy: ±2°C over the range of 0 to 330°C, ±4°C from -50 to 0°C.
- Easy to read LCD display with low battery, and backlight indication.
- Auto power off facility that turns the instrument off after 10 seconds to preserve battery life.
- Laser assisted alignment to assist in pin-pointing the area of measurement.
- 12:1 optic ratio (target distance/diameter ratio) and a fixed emissivity of 0.95.

Description	Part No.
Multi-Function Thermometer	ETI814-080



## ETI MULTI FUNCTION THERMOMETER

Compact digital multi-function thermometer with an easy to read LCD that displays both temperature & the alarm set temperatures.

- Temperature range: -19.9 to 149.9 °C with a 0.1 °C resolution.
- Accuracy: ±1 °C (0 to 120 °C) otherwise ±2 °C.
- Display hold facility and max/min memory function.
- Adjustable audible high/low temperature alarm.
- Supplied with stainless steel probe ø3.3 x 125mm with a 1 metre PVC lead, pocket clip and probe cover.



Description	Part No.
Multi-Function Thermometer	ETI810-927

## ETI ECOTEMP MAX /MIN THERMOMETER

Features a large, easy to read, LCD display with display hold and max/min memory functions. Both open circuit and low battery indication are displayed, when applicable.

- Temperature range: -49.9 to 199.9°C with a 0.1°C/°F resolution.
- Accuracy: ±1°C (-49.9 to 149.9°C).
- Display: custom 22mm LCD.
- Dimensions: 20 x 58 x 165mm.
- Supplied with stainless steel probe ø3.3 x 125mm with a 700mm silicone lead.



Description	Part No.
Ecotemp Max/Min Thermometer	ETI810-950

## DISHTEMP DISHWASHER THERMOMETER

The DishTemp® dishwasher thermometer simulates a plate as it's cleaned and sanitised in a commercial dishwasher, accurately recording the maximum surface temperature at the touch of a single button. Eliminates the need for costly and inaccurate test strips and stem thermometers that don't stay in place and don't record temperature at the plate surface. Supplied complete with a traceable certificate of calibration, calibrated at one point only 71°C.

Uses 3 volt CR2032 lithium coin cell with 5000 hour battery life.

Dimensions: 14 x Ø127mm.

Range: 0 to 90°C ±0.5°C accuracy.

IP66 rated.



Description	Part No.
Dishtemp Dishwasher Thermometer	ETI810-280

## ETI PENETRATION TEMPERATURE PROBE

Stainless steel hand held penetration probe Ø3.3 x 130mm with 1000mm straight lead and type K miniature plug connector. Suitable for measuring temperature in a wide variety of applications including meat, liquids and semi-solids.

- Temperature range: -60 to 250°C.
- Dimensions: Ø3.3 x 130mm x 1000mm lead.

Description	Part No.
Stainless Steel Penetration Probe Type K	ETI123-160



## ETI FIBREGLASS OVEN TEMPERATURE PROBE

This fibreglass exposed junction wire probe is ideal for measuring the air temperature of ovens, hot cupboards and similar appliances.

- Temperature range -60 to 350°C.
- Response time less than 0.5 seconds.
- Dimensions: Ø1.5 x 1000mm long fitted with type K miniature plug connector.

Description	Part No.
Fibreglass Wire Oven Probe Type K	ETI133-382



## TESTO 760 DIGITAL MULTIMETER

The Testo 760 digital multimeter family includes three models suitable for all important electrical measuring tasks. Function keys replace the traditional dial on all three instruments, which means easier operation and greater reliability. Measurement parameters are detected automatically via the assignment of the measuring sockets and also shown by the illumination of the appropriate function keys.

Description	Part No.
760-1 Multimeter	TES05907601
760-2 TRMS Multimeter	TES05907602
760-3 TRMS Multimeter	TES05907603



## TESTO 770 CLAMP METER

The Testo 770 clamp meter features automatic measurement parameter detection which ensures fast and reliable work. In the current and voltage area, all three versions of the clamp meter detect direct and alternating current and automatically select other parameters such as resistance, diode, capacitance, and continuity where applicable.

Description	Part No.
770-1 Cable-Grab Clamp Meter	TES05907701
770-2 Cable-Grab Clamp Meter	TES05907702
770-3 Cable-Grab Clamp Meter	TES05907703



## TESTO 750 VOLTAGE TESTER

The Testo 750 Voltage Tester have an all-round LED display. This means the display can be seen from all angles and guarantees an ideal voltage indication.

Description	Part No.
750-1 Voltage Tester	TES05907501
750-2 Voltage Tester	TES05907502
750-3 Voltage Tester	TES05907503



## TESTO 755 CURRENT & VOLTAGE TESTER

The Testo 755 Current & Voltage Testers automatically select the correct setting for the application, minimising dangers associated with using the incorrect settings. Both versions have all the important functions for determining voltage / de-energisation, for measuring current and resistance, as well as for continuity tests.

Description	Part No.
755-1 Current-Voltage Tester	TES05907551
755-2 Current-Voltage Tester	TES05907552



## TESTO 745 NON-CONTACT VOLTAGE TESTER

The Testo 745 Non-Contact Voltage Tester has a voltage range of up to 1,000 V AC. It is ideal for fast initial checking of any suspected fault sources. The Voltage Tester will flash red and makes a corresponding warning sound if an alternating current is present. It also has a filter for high-frequency interference signals therefore increasing its reliability. IP67 rated.

Description	Part No.
745 Non-Contact Voltage Tester	TES05907450



## TPI 133 DIGITAL MULTIMETER

A hand-held autoranging DMM that features extra large numerals on the LCD and Data Hold for all functions and ranges.

- Large LCD that is easy to read at all angles and the majority of lighting levels.
- Rubber Boot for added protection if the instrument is dropped.
- Multi-function to measure all electrical characteristics with one meter.
- 0.5% DCV basic accuracy.
- 0 to 750 ACV with maximum resolution of 1mV.
- 0 to 1,000 DCV; with maximum resolution of 0.1mV.
- 0 to 20MΩ with maximum resolution of 0.1Ω.
- 0 to 10 amps AC/DC with resolution of 0.1uA.
- AT II – 1000V, CAT III – 600V, cULus 61010-1.
- Meets CE and IEC 1010 requirements. UL Listed to U.S. and Canadian Safety Standards.

Description	Part No.
133 Digital Multimeter	TPI133



## TPI 265 DIGITAL CLAMPMETER

Perfect for tight, narrow, spaces. The TPI 265 with slim jaw and body is ideal for cramped work areas and crowded electrical panels. The 265 is a hand-held, autoranging clamp-on DMM. Extra large numerals, capacitance, frequency and data hold are just a few of the features. The 265 offers affordable measurements of all basic electrical functions.

- Slim jaw and body design for use in crowded electrical panels.
- Capacitance up to 4,000 micro-farads.
- Up to 400 AC amps with 0.01 resolution.
- Diode, resistance and audible continuity.
- Test start and run capacitors.
- Measure heat anticipator current.
- Determine thermocouple voltage.
- Test line and control voltages.
- Measure heating element resistance.
- Measure and adjust variable frequency drives.
- CAT III 600V rated; cULus 61010.



Description	Part No.
265 Digital Clampmeter	TPI265

## TPI 50 NON CONTACT VOLTAGE DETECTOR

Just hold this detector near to a voltage source to detect the presence of AC voltage.

- Tip glows red when voltage is detected and a buzzer is activated.
- Non-contact AC voltage detection from 50 to 1000V.
- No switch, always on and ready for use and powered by standard AAA batteries.



Description	Part No.
50 Non-Contact Voltage Detector	TPI50

## MARTINDALE VOLTAGE INDICATOR, PROVING DEVICE & LOCK OUT KIT

The complete solution for safe isolation, the Martindale VIPDLOK138 Lock Out Kit contains the VI13800 voltage indicator, PD440 proving device, along with a complete lock out kit, supplied in soft carry cases. The kit simplifies compliance with Health & Safety recommendations for safe working practices when maintaining or installing electrical plant and equipment.



Description	Part No.
VIPDLOK138 Voltage Indicator, Proving Device & Lock Out Kit	MLEVIPDLOK138

## MARTINDALE VOLTAGE INDICATOR & PROVING DEVICE

The Martindale VIPD138 kit includes the VI13800 voltage indicator and matching PD440 proving unit. Kits are supplied in the TC69 combination carry cases to ensure that proving devices are always at hand and provide the simplest solution for implementing safe isolation practices on-site in accordance the Electricity at Work Regulations. For convenience and to save time, the proving unit can be used without having to remove it from the case.



Description	Part No.
VIPD138 Voltage Indicator VI13800 & PD440 Proving Device Kit	MLEVIPD138

### VI13800 Voltage Indicator.

Provides instant visual AC and DC voltage indication in four stages from 50V to 400V. The bright long life LED indicators give clear and immediate display of the voltage level range. It has retractable probes, heavy duty finger guards and a two layer double insulated cable with a white inner core to give clear indication of damage that might compromise the user's safety.



Description	Part No.
VI13800 Voltage Indicator	MLEVI13800

### PD440 440V AC Proving Unit.

Designed to enable voltage indicators to be fully checked, in compliance with Health & Safety recommendations.



Description	Part No.
PD440 440V AC Proving Unit	MLEPD440

## MARTINDALE LOCKOUT ITEMS

Description	Part No.
Red Safety Padlock 38mm	MLEPAD11RD
"DO NOT SWITCH ON" Lock Out Tag (PK10)	MLETAG4
Steel Lockout Hasp	MLELOKHASP25





## MARTINDALE COMPREHENSIVE LOCK OUT KIT

Electrical safety is paramount when performing 17th Edition and Part P installation testing. Every year people suffer electric shock and burn injuries, some of which are fatal. Implementing the correct safe isolation procedures will ensure the safety of the electrician and avoid these accidents.

The Martindale universal lock out kit is compatible with most circuit breakers. It is supplied with a padlock that has its own unique key, and a safety hasp that enables multiple users to lock off with space for up to 6 padlocks.



The full 16 piece kit includes:

- 1 x Padlock with unique key.
- 1 x Steel safety hasp, with space for up to 6 padlocks.
- 1 x Green mini MCB lock.
- 1 x Yellow mini MCB lock.
- 1 x Blue medium MCB lock.
- 1 x Large red MCB lock.
- 1 x Small red MCB lock.
- 1 x Red fuse lockout breaker.
- 1 x Yellow fuse lockout breaker.
- 5 x Danger tags which can be overwritten.
- 1 x Black marker for writing on Danger tags.
- 1 x TC55 soft carry case.

Description	Part No.
LOKKIT1 Comprehensive Lock Out Kit	MLELOKKIT1

## MARTINDALE TEK 500 MICROWAVE DETECTOR

Easy to use, low cost detector for microwave ovens. Tests to BS 5175 and complies with NRPB-GS11 on permitted exposure levels. Indicates leakage levels using bright LEDs in a traffic light system. Includes a beaker and digital thermometer for testing that the microwave is heating correctly. Also includes carrying case, instruction manual and 9V battery.



Description	Part No.
TEK 500 Microwave Detector	MLETEK500

## RATIONAL HYDRAULIC PULLER KIT

Description	Part No.
Hydraulic Fan Wheel Puller Kit	RATW33205



## FAST FIT MICRO PULLER

Ideal for removing small bearings. The legs and beams are manufactured from high quality steel and heat treated for extra strength.

Puller Spread Min-Max: 19-45mm.

Puller Reach: 73mm.

Self-centering force screw with 'T' bar and 13 hex drive.



Description	Part No.
Fast Fit Micro Puller	PTVS-1450

## 6 PIECE GAS JET REAMER SET

6 piece jet reamer set with diameter range of 0.6-0.8-1-1.3-1.6-2mm.

Description	Part No.
6 Piece Gas Jet Reamer Set 0.6-2mm	PTVS-1451



## 12 PIECE GAS JET REAMER SET

12 piece jet reamer set with diameter range of 0.6 to 1.9mm.

Description	Part No.
12 Piece Gas Jet Reamer Set 0.6-1.9mm	PTVS-1452



## U TUBE MANOMETERS

Resilient plastic gauges with high impact PVC case and cover, which slots into the base to form a stand. Fitted with a rubber sucker as an alternative support. Plastic U tube with choice of flexible or rigid perspex with graduations in mb and inches.

Supplied with a short length of rubber hose.

Dimensions: 395 x 37 x 25mm (30mb) 595 x 37 x 25mm (45mb).

Description	Part No.
30mb Manometer Flexible U Tube	PTVS-1453
30mb Manometer Hard Perspex U Tube	PTVS-1454
45mb Manometer Hard Perspex U Tube	PTVS-1455
Red Rubber Hose 6mm Id X 2000mm Long	PTVS-1456



## DRAPER STORMFORCE® 20V COMBI DRILL

20V cordless combi drill supplied with case, a quick one hour charger and two 2Ah batteries.

- 3 functions: Drill, Screwdriver, Hammer.
- 13mm keyless chuck.
- Two speed gearbox with 22 torque control positions.
- Variable speed control with electronic brake.
- Battery level indicator.
- Spindle Lock.
- LED worklight.



Description	Part No.
Stormforce 20V Cordless Combi Drill	DRA89523

## COLBALT DRILL BIT SET

19 piece cobalt drill bit set suitable for use on alloy steel, hardened steel, stainless steel, cast iron and titanium. Sizes 1 to 10mm in 0.5mm increments.

Description	Part No.
19 Piece Set Of Cobalt Drill Bits 1 To 10mm	PTVS-1496



## DRAPER METRIC HSS COBALT DRILL BITS

Metric sized, high speed steel drill bits with 5% cobalt.

The cobalt prevents wear and makes the bit ideal for drilling hard materials such as stainless steel. 7 to 13mm drill bits also available.

Description	Part No.
1mm Cobalt Twist Drill	DRA39085
1.5mm Cobalt Twist Drill	DRA39088
2.0mm Cobalt Twist Drill	DRA39091
2.5mm Cobalt Twist Drill	DRA39092
3.0mm Cobalt Twist Drill	DRA39093
3.2mm Cobalt Twist Drill	DRA39098
3.5mm Cobalt Twist Drill	DRA39116
4.0mm Cobalt Twist Drill	DRA39133
4.5mm Cobalt Twist Drill	DRA39154
5.0mm Cobalt Twist Drill	DRA39222
5.5mm Cobalt Twist Drill	DRA39227
6.0mm Cobalt Twist Drill	DRA39229
6.5mm Cobalt Twist Drill	DRA39230



## DRAPER HSS TWIST DRILLS

Expert Quality, high speed straight shank twist drills to DIN 338 and ISO 235/1.

Description	Part No.
2mm HSS Twist Drill Ea	DRA38609
2.5mm HSS Twist Drill Ea	DRA38610
3mm HSS Twist Drill Ea	DRA38611
3.5mm HSS Twist Drill Ea	DRA38615
4mm HSS Twist Drill Ea	DRA38616
5mm HSS Twist Drill Ea	DRA38621
6mm HSS Twist Drill Ea	DRA38623



## DRAPER STEPPED DRILL BIT SD4-20MM

Drills in 2mm steps from 4mm to 20mm in steel, brass, copper, aluminium, wood and plastics.

Description	Part No.
Step Drill Bit 4-20mm	DRA71220



## DRAPER VDE 10 PIECE INTERCHANGABLE SCREWDRIVER SET

Contents:

- 4 plain slot sizes: 3.0 x 100, 4.0 x 100, 5.5 x 100 and 6.5 x 100mm.
- 2 cross slot sizes: No.1 and 2.
- 2 PZ TYPE: No1 and 2.
- Fully insulated high torque screwdriver handle.
- Fully insulated precision screwdriver handle.

Description	Part No.
VDE 10 Piece Interchangeable Screwdriver Set	DRA05721



## DRAPER VDE HAND TOOLS

Description	Part No.
VDE Combination Pliers 160mm	DRA69170
VDE Combination Pliers 180mm	DRA99062
VDE Combination Pliers 200mm	DRA69172



Description	Part No.
VDE Long Nose Pliers 160mm	DRA69174
VDE Long Nose Pliers 200mm	DRA69176



Description	Part No.
VDE Diagonal Side Cutters 180mm	DRA69180
VDE Diagonal Side Cutters 200mm	DRA69181



Description	Part No.
VDE Waterpump Pliers 250mm	DRA50293



## DRAPER 7 PIECE REVERSIBLE RATCHETING SPANNER SET

Convenient to use reversible ratcheting spanners, is especially suited for use in confined spaces as only 5° movement is required. Manufactured from chrome vanadium steel with 15° offset head. Sizes - 8, 10, 12, 13, 14, 17 and 19mm.

Description	Part No.
7 Piece Reversible Ratcheting Spanner Set	DRA51179



## DRAPER SOFT GRIP ADJUSTABLE WRENCHES

Expert Quality, crescent-type wrenches manufactured from chrome vanadium steel hardened and tempered with a black oxide finish. Fitted with soft grip handles for comfort and with metric scale on the fixed jaw.

Description	Part No.
Soft Grip Adjustable Wrenches	DRA24893
Soft Grip Adjustable Wrenches	DRA24894
Soft Grip Adjustable Wrenches	DRA24896
Soft Grip Adjustable Wrenches	DRA24897



## DRAPER HEAVY DUTY WATERPUMP PLIERS

Expert Quality, chrome vanadium steel hardened and tempered with chemically blacked finish, featuring multi position adjustments and 'no-nip' PVC dipped handles, which prevent the handles from locking together at their largest capacity and nipping the users hands.

Description	Part No.
Expert 250mm Heavy Duty Waterpump Pliers	DRA84445



## DRAPER CIRCLIP PLIER SET 5PC

Combination circlip plier set for inside or outside circlips.

Contents:

- Two straight heads.
- One 90° head.
- One 45° head.
- Pair of handles.



Description	Part No.
Circlip Plier Set 5pc	DRA19735

## DRAPER CIRCLIP PLIERS

Description	Part No.
180mm Straight Tip External Circlip Pliers	DRA38997
180mm Straight Tip Internal Circlip Pliers	DRA38995
170mm 90° Tip External Circlip Pliers	DRA38998
170mm 90° Tip Internal Circlip Pliers	DRA38996



## DRAPER ALLEN KEY SETS

Manufactured from chrome vanadium steel that's hardened and tempered. Held in plastic storage holder.

Description	Part No.
Allen Keys - Metric - Set	DRA33687
Allen Keys - Imperial - Set	DRA33688
Extra Long Metric Hexagon And Ball End Hexagon Key Set (10 Piece)	DRA33719



## DRAPER SOCKET SET

Supplied with a 72 tooth reversible soft grip ratchet and accessories. Packed in tough plastic storage case.

Contents:

- 13 x Sockets: 4, 4.5, 5, 5.5, 6, 7, 8, 9, 10, 11, 12, 13, 14mm.
- 10 x Deep sockets: 5, 6, 7, 8, 9, 10, 11, 12, 13, 14mm.
- 1 x 72 tooth reversible ratchet with soft grip handle and quick release button.
- 3 x Wobble extension bars: 50, 100, 150mm.
- 1 x Sliding 'T' bar.
- 1 x Universal joint.
- 1 x Spinner handle.



Description	Part No.
Metric Socket Set, 1/4" Square Drive 30 Piece	DRA16444



## DRAPER AUTOMATIC RETRACTABLE KNIFE

Retractable pattern complete with a two notch blade which retracts automatically when released. Diecast zinc alloy with enamelled finish.

Description	Part No.
Automatic Retractable Trimming Knife	DRA66274



## DRAPER INSPECTION MIRRORS

Fully flexible shaft and fixed head with mirror 55mm diameter to give good visibility in concealed areas. Plated finish with plastic grip.

Description	Part No.
Flexible Shaft Inspection Mirror	DRA11954



## LED TORCHES

LED Torch 600 lm - Batteries Included.

Description	Part No.
RS Pro F21 Led Torch Black, Red 600 lm, 163mm	PTVS-1497



3W Rechargeable Cob Led Headlamp - 3W Cob Rechargeable Headlamp With Two Function Switch; The First Function Delivers High/Low/ Strobe Lighting And The Second Function Delivers Cob High/Low Lighting.

Description	Part No.
3W Rechargeable Cob Led Headlamp	PTVS-1498



## DRAPER TECHNICIANS LAPTOP & TOOL BAG

Manufactured from water repellent polyester with adjustable carrying handle and detachable shoulder strap. Multiple internal and external pockets for storing tools, equipment and computers etc.

Description	Part No.
Technicians Laptop & Tool Bag	DRA89209



## BATTERIES

Description	Part No.
CR2032 Coin Battery	PTVS-1499
BR1225 Coin Button Battery	PTVS-1500



Description	Part No.
PRO Alkaline 9V Batteries PP3	PTVS-1501



## ABRASIVE CLEANING ITEMS

Description	Part No.
Wire Wool 1lb Pack	PTVS-1502



Description	Part No.
Waterproof Abrasive Cloth Strip - 5m	PTVS-1457



Description	Part No.
Wire/Nylon Brush Set 3Pc 230mm	DRA26928



## CHT SPECIALIST GREASE & SEALANTS

Description	Part No.	Size
SGM494 Translucent Potable Silicone Grease -50 To +200°C 250g Tube	ACSSGM494/250G	250g
SGM494 Translucent Potable Silicone Grease -50 To +200°C 1Kg Tub	ACSSGM494/1KG	1KG



Description	Part No.	Size
Silcoset 153 Translucent Silicone Sealant -60 To +225°C 75 ml	ACSSILCOSET153-75	75ml
Silcoset 153 Translucent Silicone Sealant -60 To +225°C 310 ml	ACSSILCOSET153-310	310ml
Silcoset 152 White Silicone Sealant -60 To +300°C 75 ml	ACSSILCOSET152-75	75ml
Silcoset 152 White Silicone Sealant -60 To +300°C 310 ml	ACSSILCOSET152-310	310ml
Silcoset 158 Black Silicone Sealant -60 To +300°C 75 ml	ACSSILCOSET158-75	75ml
Silcoset 158 Black Silicone Sealant -60 To +300°C 310 ml	ACSSILCOSET158-310	310ml
AS1502 Grey Foodsafe Adhesive Silicone Sealant -50 To +300°C 310 ml	ACSAS1502	310ml
AS1504 Red Adhesive Silicone Sealant -50 To +300°C 310 ml	ACSAS1504	310ml



## LOCTITE SILICONE SEALANTS

Description	Part No.
595 Transparent Sealant Paste 100 ml	PTVS-1458
5940 Paste Adhesive, 100 ml	PTVS-1459



## DRAPER CAULKING GUN

For 310ml cartridges

Description	Part No.
Draper Caulking Gun	DRA16238



## FERNOX LS-X SEALANT

Fast acting silicone paste suitable for use as an external sealing or joining compound. WRAS Approved.

Description	Part No.
LS-X Leak Sealer External 50g	FEX603022



## LOCTITE 55 SEALING TAPE

Suitable for hot and cold potable water and gas pipework to replace pastes, hemp etc.

Description	Part No.
Loctite 55 Sealing Tape 50m	PTVS-1460
Loctite 55 Sealing Tape 150m	PTVS-1461



## LOCTITE THREAD SEALANT

Description	Part No.
243 Blue Threadlocking Adhesive	PTVS-1462
222 Purple Threadlocking Adhesive	PTVS-1463



## PTFE TAPE

Description	Part No.
PTFE Tape 12m BS7786 WRAS Approved Product	PTVS-1464



## ROCOL LUBRICANTS, CLEANING & PENETRATING SPRAYS

Description	Part No.
Foodlube Universal Grease Food Grade Non-Toxic Lubricant Fortified With PTFE 300 ml	ROC15231



Description	Part No.
Foodlube Multipaste Anti-Seize Lubricant Paste 85g	ROC15750
Silicone Grease Sapphire Aqua-Sil For Use At Extreme Temperatures 85g	ROC12251



Description	Part No.
Foodlube Spray Food Grade Multipurpose Lubricant Spray 300 ml	ROC15710
Foodlube WD Spray Food Grade Lubricating Spray With PTFE 300 ml	ROC15010
Foodlube Chain Spray Food Grade Chain And Conveyor Lubricant 300 ml	ROC15610
Foodlube Dismantling Spray Food Grade Penetrating Spray 300 ml	ROC15720
Rocol Heavy Duty Cleaner Spray Water Washable Degreaser 300 ml	ROC34011
Rocol Penetrating Spray Contains Molybdenum Disulphide 300 ml	ROC14021
Precision Air Duster For Removal Of Dust And Debris From Delicate Or Hard To Reach Items 300ml	ROC32315



## DRAPER GREASE GUN

Lever action gun for use with standard 400g grease gun cartridges. Supplied with delivery tube, connector with 1/8" BSPT thread and pressure relief valve. Safe working pressure 55MPa (8000psi).

Description	Part No.
Side Lever Grease Gun 500cc	DRA47807



## WD40 LUBRICANT AEROSOL 300ML

A multi-purpose aerosol product which actively displaces water leaving a protective film of lubricant that is an electrically non-conductive barrier. Penetrates rust and corrosion by capillary action, loosening rusted parts. Cleans away grease and grime and protects metal against rust and corrosion.

Description	Part No.
WD40 Lubricant Aerosol 300ml	PTVS-1465



## DRAPER SILICONE SPRAY

Anti-static lubricant for metal, plastic, vinyl, rubber and wood etc. Colourless, non-toxic and CFC free.

Description	Part No.
Draper 400ml Silicone Spray	DRA41923



## DIVERSITECH G2G SMELL BUSTER

A unique ready to use odour elimination spray that is not a perfume or cover up but actually removes unpleasant smells from the air. Available in a 1 litre trigger spray bottle or in tablet form.

Description	Part No.
G2G Smell Buster Spray 1L	DIVG2G-SMELL-BUSTER
Smell Buster Tablets 2x60g	DIVSMELL-BUSTER



## SILICONE THERMAL GREASE 20ML

Metal oxide filled silicone oil paste. Provides superior thermal conductivity for both electrical and electronic components.

- Thermal Conductivity: 2.9W/m-K.
- Operating Temperature Range: -40°C to 200°C.
- Tube Size: 20ml.

Description	Part No.
Silicone Thermal Grease 2.9W/M-K	PTVS-1466



Metal oxide filled silicone oil paste. Improves thermal conductivity for both electrical and electronic components.

- Thermal Conductivity: 0.65W/m-K.
- Operating Temperature Range: -100°C to 200°C.
- Tube Size: 20ml.

Description	Part No.
Silicone Thermal Grease 0.65W/M-K	PTVS-1467



## BOSTIK ALL PURPOSE ADHESIVE 20ML

Supplied in a 20ml tube.

Description	Part No.
All Purpose Adhesive 20ml	PTVS-1468



## ALUTAPE

Provides a durable anti-static surface finish with a self adhesive background.

Description	Part No.
Alu Tape 50mm Wide x 45m	PTVS-1469



## ROCOL SCRUBS HAND CLEANING WIPES

Hand cleaning wipes with a citrus-based formula. Dual-textured for heavy duty cleaning that quickly loosens, dissolves and absorbs dirt, grease and grime.

Description	Part No.
Scrubs Hand Cleaning Wipes Tub of 72	ROC042272





## DRAPER HI-SENSITIVITY (SCREEN TOUCH) GLOVES

13 gauge polyester gloves with polyurethane coated palms and elasticated wristbands, allowing wearers to operate touch-screen devices without removal of gloves.

Available in 3 sizes (M/L/XL).

Description	Part No.
Hi-Sensitivity (Screen Touch) Gloves - Medium	DRA65813
Hi-Sensitivity (Screen Touch) Gloves - Large	DRA65816
Hi-Sensitivity (Screen Touch) Gloves - Extra Large	DRA65822



## PROTECTIVE GLOVES

All-purpose glove ideal for use as a barrier layer. One large size to fit all.

Description	Part No.
Box of 100 Powder Free Blue Nitrile Gloves	DRA63758
Box of 100 Powder Free Black Nitrile Gloves	DRA31035
Box of 100 Powder Free White Latex Gloves	PTVS-1470
Box of 100 Powdered White Latex Gloves	PTVS-1471
Box of 100 Powder Free Blue Vinyl Gloves	PTVS-1472
Box of 100 Powdered Blue Vinyl Gloves	PTVS-1473



## DRAPER PVC GAUNTLETS

Manufactured to BS EN420 and EN388 Specifications 4.1.2.1. PVC dipped with open cuff for protection against acid, alkali and grease. Ideal for use during cleaning and washing.

Description	Part No.
PVC Gauntlets	DRA16229



## TRAFFIGLOVE EXTRA DEXTERITY GLOVES

TG5220 range of lightweight gloves with level C cut protection compliant to EN388:2016. Three of the finger tips are exposed to improve dexterity and allows the wearer to use touchscreen devices. A PU coating offers excellent grip in dry conditions. Close fit and high tear and abrasion resistance makes this glove a good choice for general handling tasks with a cut risk.

- EN 388:2016: 4 X 4 3 C.
- Liner: Nylon/HPPE/Glass.
- Coating: X-Dura PU.

Description	Part No.
Traffiglove Extra Dexterity Gloves Size 9 (L) X-DURA PU C	PTVS-1503
Traffiglove Extra Dexterity Gloves Size 8 (M) X-DURA PU C	PTVS-1504
Traffiglove Extra Dexterity Gloves Size 10 (XL) X-DURA PU C	PTVS-1505



## DRAPER SAFETY GLASSES

- Manufactured from impact resistant polycarbonate.
- Usable over conventional glasses.
- Conforms to EN166.1.F specifications.

Description	Part No.
Safety Glasses	DRA51132



## DRAPER SAFETY GOGGLES

Safety glasses manufactured from impact resistant polycarbonate. Protective wraparound design with clear lens and distortion free viewing. Can be worn over spectacles.

Description	Part No.
Safety Goggles	DRA51130



## KNEELING MAT

Description	Part No.
Kneeling Mat	PTVS-1474



## DRAPER FIRST AID KIT

First aid kit in durable plastic box with carrying handle.

Contains:

- 20 x Saline wipes.
- 6 x Large powder - free nitrile gloves.
- 2 x Medium sterile first aid dressing 12cm x 12cm pad size.
- 2 x Large sterile first aid dressing 18cm x 18cm pad size.
- 2 x Non - woven triangular bandage 90cm x 90cm x 127cm.
- 2 x No.16 sterile eye pad first aid dressing with bandage.
- 2 x Sterile individually wrapped finger dressing 3.5cm x 3.5cm.
- 1 x Box of 40 washproof plasters.
- 1 x Pack of four safety pins.
- 1 x Emergency thermal blanket 210cm x 130cm.
- 1 x Hydrogel burn dressing 10cm x 10cm.
- 1 x Conforming bandage 7.5cm x 4.5M.
- 1 x Revive aid mouth to mouth resuscitator.
- 1 x Small tuff cut scissors.
- 1 x Microporous tape 2.5cm x 5M.
- 1 x First aid at work guidance leaflet.

Description	Part No.
Small First Aid Kit	DRA81288



## BURN GEL SACHETS

Antibacterial burn gel that cools the burn and soothes pain.  
Helps prevent infection.

Description	Part No.
Burn Gel Sachets	PTVS-1475



## PORTABLE EYE WASH BOTTLES

Packed in 25 individual 20ml bottles to minimise waste of solution.

Description	Part No.
Portable Eye Wash Bottles, 20 ml (Box of 25)	PTVS-1476







# Partstown<sub>UK</sub>



**Parts Town UK**  
Blakeney Way  
Kingswood Lakeside  
Cannock  
WS11 8LD

**Email:** [enquiries@partstown.co.uk](mailto:enquiries@partstown.co.uk)

**www.**[partstown.co.uk](http://partstown.co.uk)